

# MROYA

## STUDIO

Service proposal



# HELLO WE ARE MROYA STUDIO

A ONE-STOP GAME TRAILER AND CGI PRODUCTION SERVICE

*/ Who We Are*

Our team of veteran artists from gaming, film, TV, and entertainment industries has deep experience in creating ground-breaking visual effects and digital content. We specialize in in-game cinematics, photorealistic CGI and VFX. We will work closely with you throughout every phase of the creative process to ensure your vision is maintained and only perfection makes it to your audience.

# OUR SERVICES



GAME TRAILERS  
AND CINEMATICS



VFX



3D CHARACTERS



ART



ENVIRONMENT



MOTION CAPTURE



SCANNING



/ Services Section

# GAME TRAILERS AND CINEMATICS

We believe that a good story and perfect execution are crucial to keeping players engrossed. We bring fantasy creatures, human characters, vehicles, environments and even props to life. We can recreate photorealistic characters and events, or wildly fantastical cartoon creations and every step in between. Huge simulations of ice, snow, fire, will be broken down into components and merged together upon completion to give a fully realized and believable end result.

## SERVICES INCLUDE

- Character & Creature design
- Modeling
- Rigging
- 3D & 2D Animation
- Motion Capture
- Performance Capture
- Direction
- Production
- VFX & FX
- Crowd Simulation
- 3D scanning
- Concept art
- Key art
- Storyboarding
- Boardmatics
- Pre-visualisations
- full CG cinematic trailers
- Cut-scenes
- LookDev
- Animated logos
- Motion Graphics
- RealTime expertise
- Light & Render
- Compositing





/Services Section

# CHARACTERS

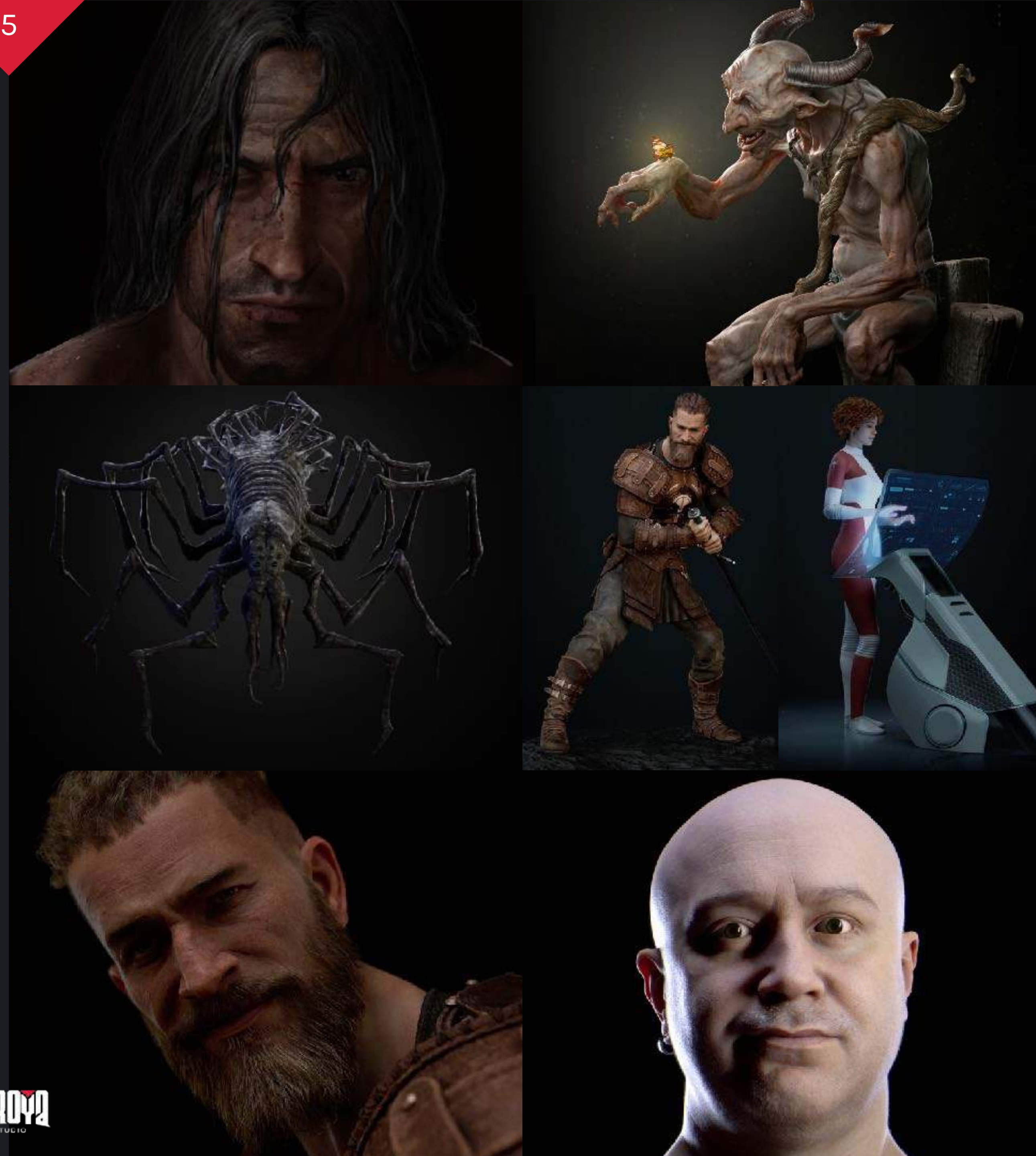
Our in-house team creates characters with unique personalities that are seamlessly integrated into their narrative context. We create 3D characters with advanced tools and expert artists, from humanoid to fantastical creatures with multiple limbs, whether you need realistic or stylized characters.

From concept and idea to a fully rigged and ready to go character.

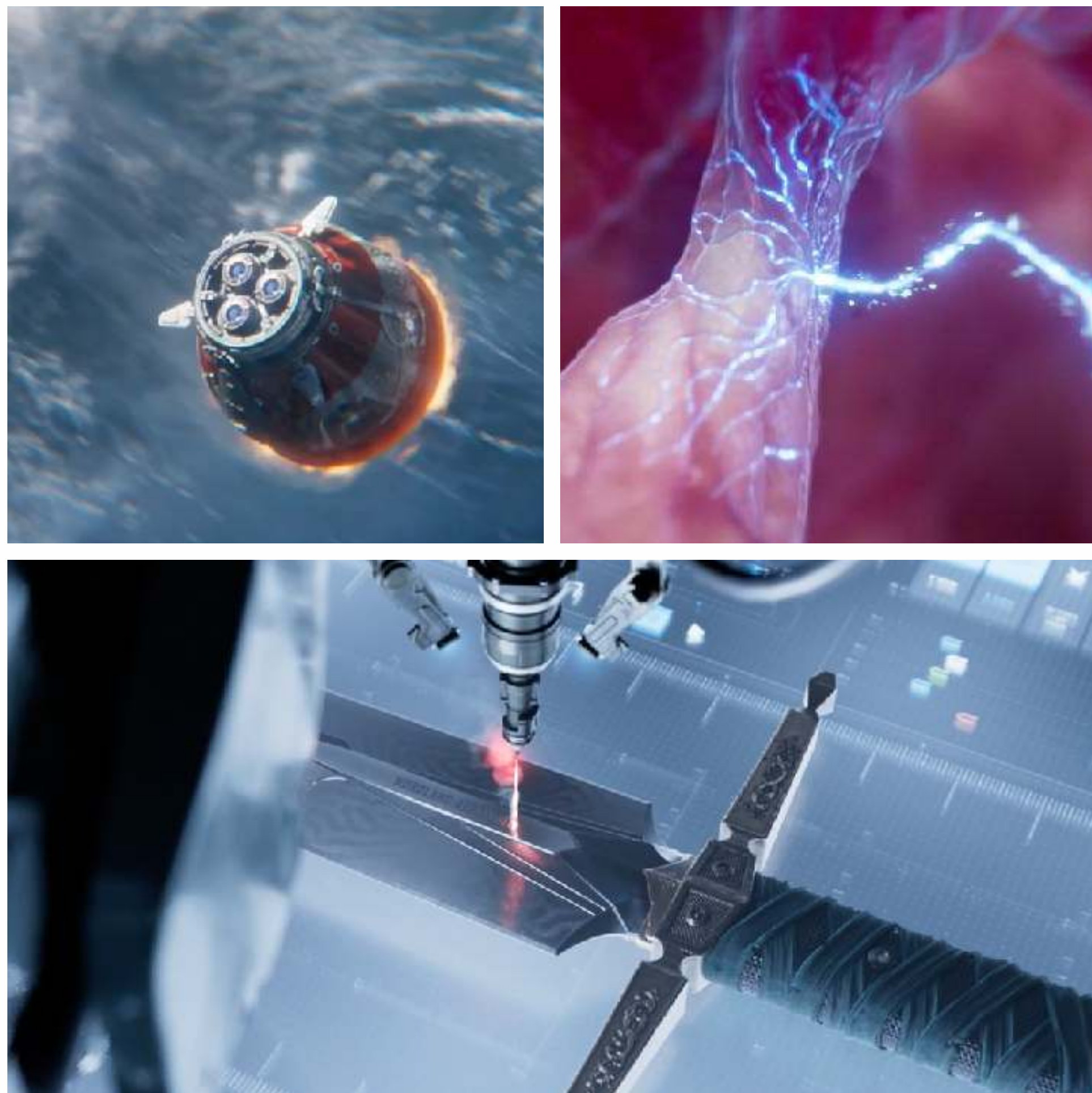
## SERVICES INCLUDE

- Concept Art
- Character Modelling
- Character Sculpting
- Character Texturing & Shading
- Character Rigging
- Character Animation

[www.mroya.studio](http://www.mroya.studio)







## */ Services Section*

# VFX

At our company, we offer VFX services that can help your trailer, movie, TV commercial or music video stand out and give your audience an unforgettable experience. We take advantage of the latest software and technology to ensure that every detail is perfect. Our years of experience have taught us how to create the best effects in the most efficient and intelligent way possible.

### SERVICES INCLUDE

- Concept Art
- FX Previzualisations
- FX simulations (smoke, fire, water, ice, snow etc)
- Crowd simulations
- RealTime VFX
- Compositing, VFX editing
- Integration with live footage



*/ Services Section*

# MOTION CAPTURE

We are using the top notch for price-quality ratio motion capture equipment: FaceWare and XSense.

## SERVICES INCLUDE

- Digital doubles
- Virtual Influencers
- Motion Capture
- Performance Capture



/ Services Section

# SCANNING

Our in-house OOBE3D scanner consists of 150 cameras and additional powerful constant lighting. The cameras are located 360 degrees in a cylindrical volume. To get more accurate geometry, images are taken with lightmarkers, and for high-quality texture taken additional images with a difference of 1/30 second. The total capacity of the scanner is 2142 megapixels and allows you to receive and transmit information for processing up to 20 models in 30 minutes.



## SERVICES INCLUDE

- Full Body Scanning
- Large Scale Environment and On-Set Scanning
- Prop and Asset Scanning



/Services Section

# ART

We set the mood and tone of your story whether it's the early stages of production or the final key art. Our talented artists shape your ideas into engaging visual expressions. Combining our wealth of industry experience with our commitment to taking it to the next level is the key.



## SERVICES INCLUDE

- Art Direction
- Concept Art
- Key art
- Character & Creature design



*/ Services Section*

# ENVIRONMENT

Our state-of-the-art technology and attention to detail allow us to create stunningly realistic environments that transport your audience to another world. From lush forests to futuristic cityscapes, we're passionate about bringing any vision to life. Our work is guided by a commitment to excellence and production deadlines, ensuring that we not only meet but exceed expectations.

## SERVICES INCLUDE

- Concept Art
- Location design
- Props modelling and texturing
- Lightning
- Pre-visualisations
- Modeling
- LookDev
- Light & Render
- Compositing

[www.mroya.studio](http://www.mroya.studio)

