



ENCLOSURE MARKET

Euro-Locks Group specializes in design and manufacture of locking systems for a broad spectrum of industrial customers.

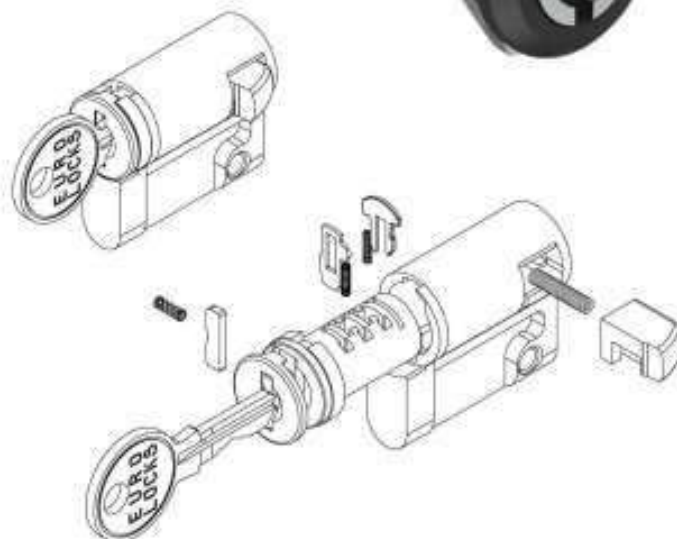
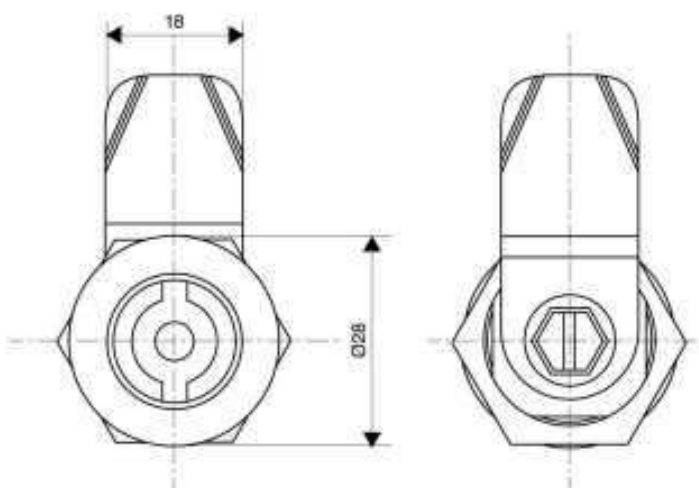
Our offer is distinctive for a wide range of products:

- Locks for the power market
- Locks for the construction market
- Locks for metal furniture
- Locks for wooden furniture
- Locks for postal boxes
- Locks for the automotive market
- Locks for safes
- Locks for window handles and other.

We manufacture IP65 class spanner locks, swinghandles, hinges, seals, camlocks, padlocks, mechanical combination locks, electronic locks, safe locks, switches, locks for window handles, barrels for different applications, locking systems for roof boxes and many others.

Why it's good to cooperate with us?

- A wide range of products (over 1000 product references)
- Highest quality of manufactured locks, confirmed with ISO9001 and VDS certificates
- Statutory warranty
- Stability of cooperation
- Excellent price-performance ratio
- Production flexibility
- Possibility of designing and manufacturing products that meet individual customer's requirements.





CONTENTS

Symbol	Description	Page
--------	-------------	------

PROGRAM

50×50×50	Program scheme	4
----------	----------------	---

EUROPROFILES

D868	Europrofile cylinder	5
P848	Europrofile cylinder	6
P829	Spanner europrofile cylinder	6

HANDLES

H826	Swinghandle for europrofile	7
H827	Swinghandle with barrel	8
H829	Swinghandle with barrel	9
H828	Swinghandle for europrofile	10
H830	Swinghandle for europrofile	11
H812	Swinghandle with spanner barrel	12

PROGRAM

50×50×50 50×25	Escutcheon program scheme	13
-------------------	---------------------------	----

ESCUTCHEONS

H807	Escutcheon with spanner barrel	14
H808	Escutcheon with spanner barrel	15
H407	Escutcheon with T and W-handle	16
H802, H805	Short escutcheons with spanner barrel	17
H405	Short escutcheon with T and W-handle	18

ACCESSORIES

W101, W198	Rods controls	19
P3149, P3152	Adapters for cam	20
P3150, P9002	Cover and gasket for swinghandle	20
1-Point cams	Cams parameters	21
2-Point cam	Cam parameters	21
3-Point cams	Cams parameters	22
PR1	Flat rods with roller	23
PR36	Round rods Ø 6	24
PR38	Round rods Ø 8	24
PR38	Round rods Ø 8 with roller	25
PR2	Flat rods with pressure rollers	25
W147	Rod guide	26
W187, W108	Rod guides	27
W102	Rod catch	28
W109	Rod guide	28
W178	Adapter for rod	28

Symbol	Description	Page
--------	-------------	------

PROGRAM

Ø 23×20	Program scheme	29
---------	----------------	----

LOCKS

H406	T-handle	30
H411	W-handle	31

HINGES

Z100, Z101, Z102	Concealed hinges	32
Z106, Z132, Z141	Concealed hinges	33
Z146, Z200	Concealed and corner hinge	34
Z300, Z306	External hinges	35
Z305	External hinge	36
Z308, Z318	External hinges	37
Z400, Z403	Pin hinges	38
Z408, Z406	Pin hinges	39
Z526, Z509	Flat hinges	40
H301	Slide latch	41

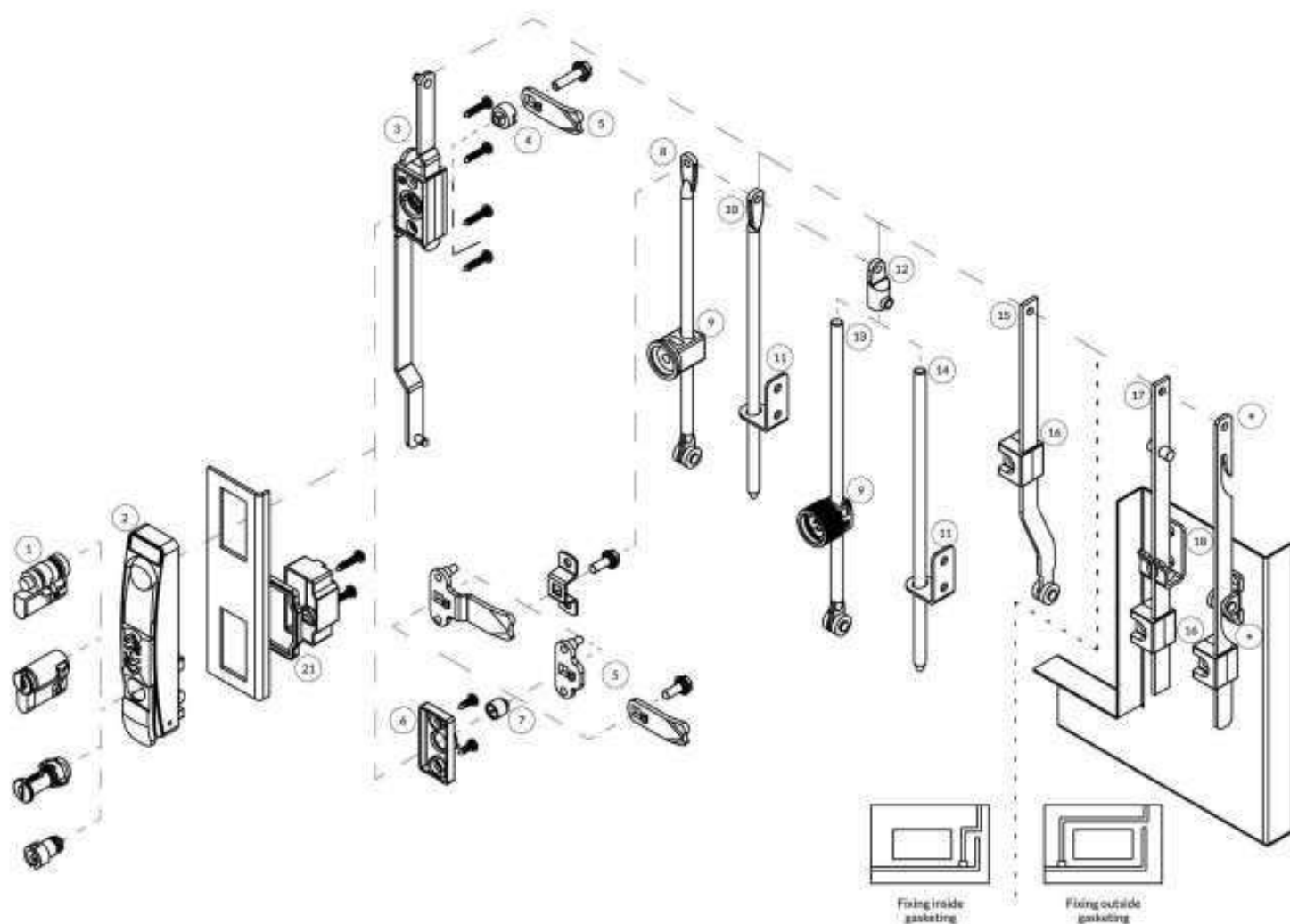
OTHER LOCKS

Explanation of product code		42
0202, 0233, B827/C046	Camlocks	43
B671, F298, B850	Camlocks	44
P858/P885, P863/P884	Camlocks	45
P859, P707	Spanner locks	46
0025/0036	Winghandle	47
P888/P889	Camlock	47
F183, F550	Spanner locks	48
B826	Minicoin	49
F600	Spanner lock	49
P451	Camlock	50
D144/D329	Compression lock	50
C839	T-handle	50
P851	Stainless steel spanner lock	51
W193	Dust cover	51
Keys for spanner locks		51

GASKETS

U306	Cell sponge rubber	52
U200, U204, U207	Self gripping gaskets	52

PROGRAM 50×50×50

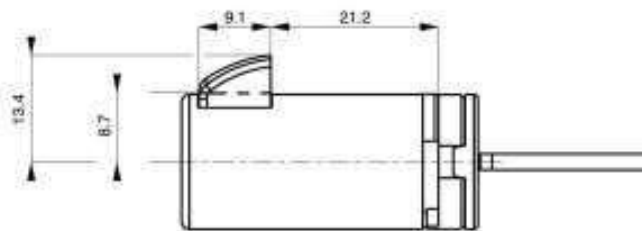
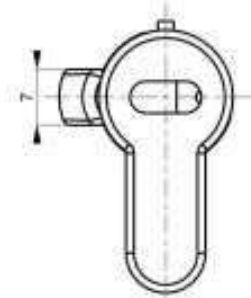
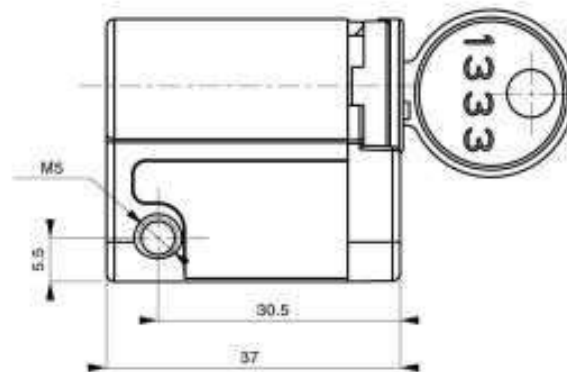
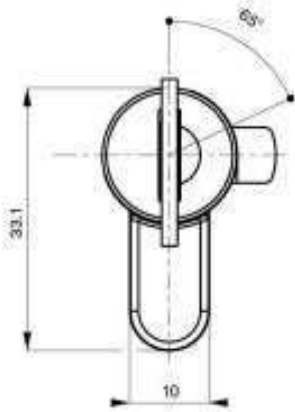


Ref.	Symbol	Description	Page
1	D867, D868, D932, P848, P829	Europrofiles	5-6
2	H812, H826, H827, H828, H829, H830	Swinghandles	7-12
3, 4, 6, 7, 21	W101, P3152, P3150, P3149, P9002	Accessories for handles	19-20
5	1, 2, 3-point cams	Cams	21-22
8, 10, 13, 14, 15, 17	PR10, PR11, PR3803, PR3612, PR3811, PR3801, PR3813, PR2	Rods	23-25
9, 11, 12, 16, 18	W108-X, W109-X, W178, W102, W187, W147	Accessories for rods	26-28

• * Available on request only (please contact with office)



D868 EUROPROFILE CYLINDER

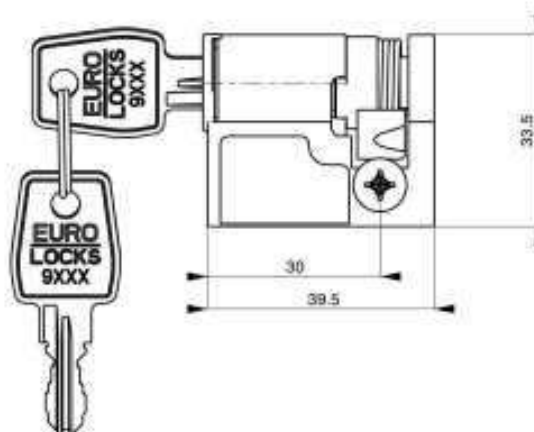
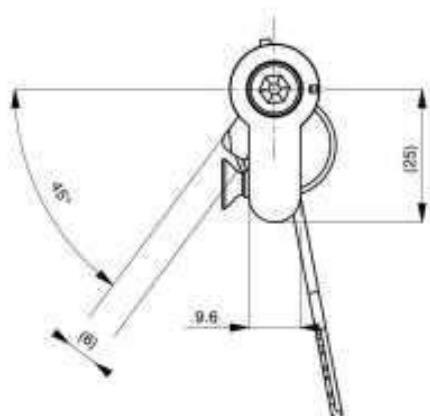


Key's series: R	D868	Key's quantity Please write the quantity of the keys, standard 2 pcs	Key's variant KTP One code, e.g. 1333 KTD Different codes
Key's series: 89	D867	Key's quantity Please write the quantity of the keys, standard 2 pcs	Key's variant KTP One code, e.g. 089, 013 KTD Different codes
Key's series: 20, 20M*	D932	Key's quantity Please write the quantity of the keys, standard 2 pcs	Key's variant KTP One code KTD Different codes

EXAMPLE: D868 – 2 – KTP 1333

- Material: ZAMAK
- Finish: Achrolyte
- Dust cap cover
- Fixing: screw M5 (included)
- Quantity of combination: 500 (series R), 200 (series 89), 200 (series 20), 50 (series 20M)
- Europrofile with the same key code (e.g. 1333, 089, 013)
- **Master* Key System available only for 20M series

P848 EUROPROFILE CYLINDER



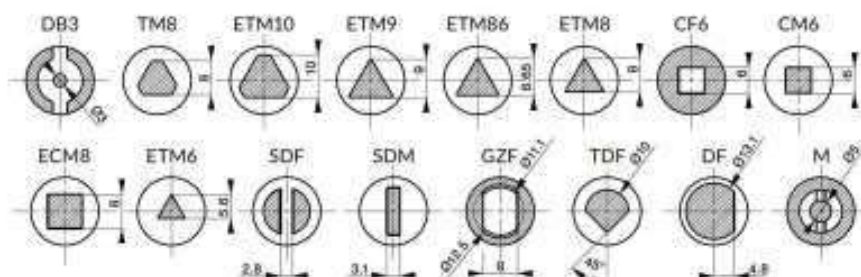
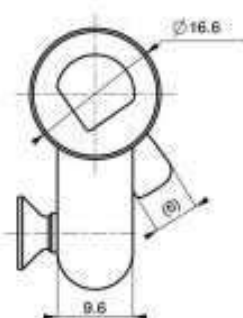
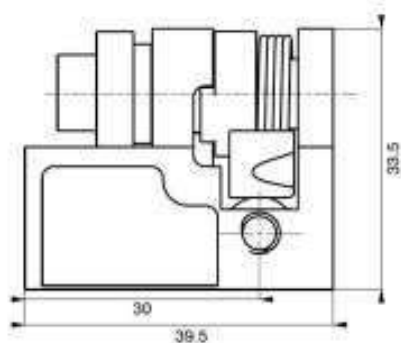
P848 – **Key's quantity**
Please write the quantity of the keys, standard 2 pcs

Key's variant
KTP One code (possibility to choose with one of the following codes) * 1333, 2433A, 1242E, 405, 455, 9081, EL422
KTD Different codes (key's series: R, 9000, 9000M **)

EXAMPLE: P848 – 2 – KTP 1333

- Material: ZAMAK
- Finish: zinc plated
- Dust cap cover
- Fixing: screw M5 (included)
- Quantity of combination: 500 (series R), 500 (series 9000, 9000M)
- Europrofile with the same key code (e.g. 1333, 9081, EL422)
- * Please define the exact key code for each lock when ordering
- ** "Master" Key System available only for 9000M series

P829 SPANNER EUROPROFILE CYLINDER



Available barrel shapes

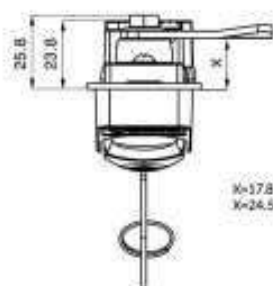
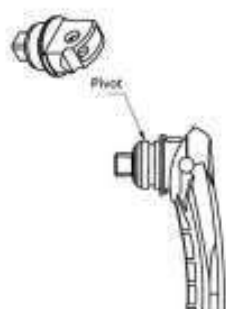
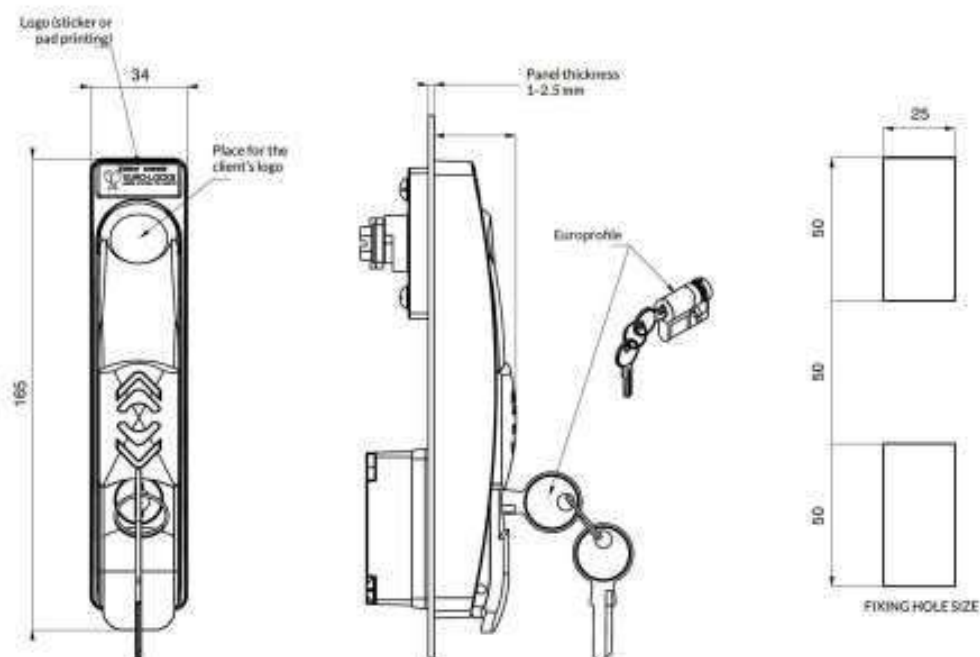
P829 – **Barrel shape**
Please write the key shape: ETM8, DB3, CM6 or other

EXAMPLE: P829 – TM8

- Material: ZAMAK
- Finish: zinc plated
- Europrofile cylinder for spanner key
- Fixing: screw M5 (included)



H826 SWINGHANDLE

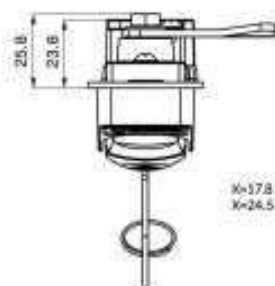
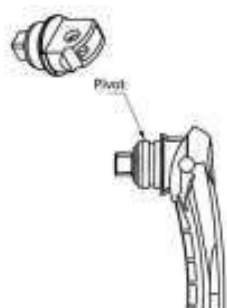
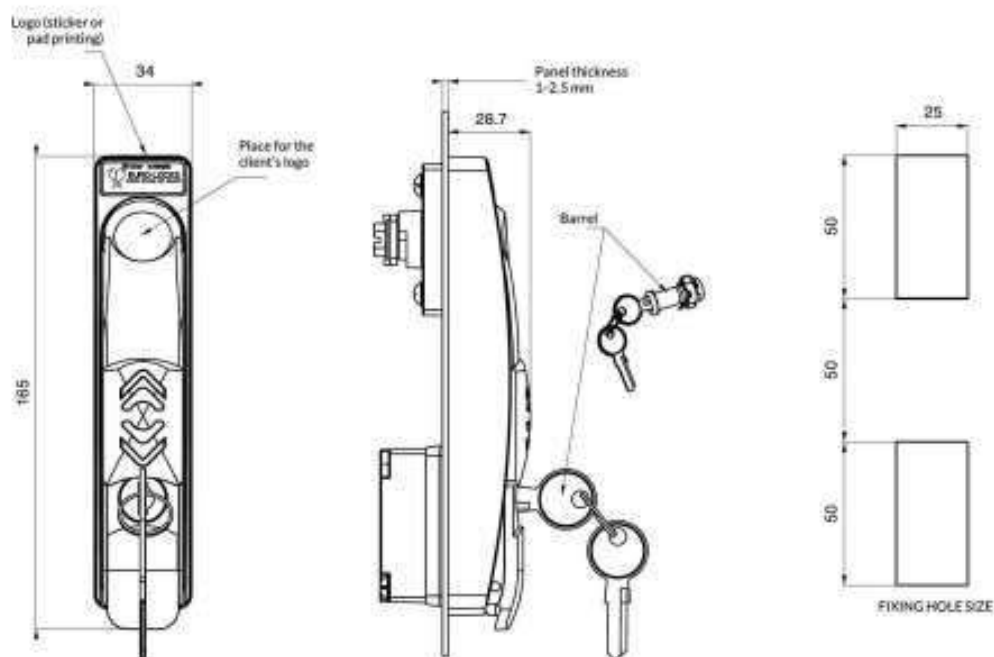


H826	IP65	Panel thickness	Pivot	Material	Colour	Sticker with logo
0	NO	1 1-1.5 mm	1 ZAMAK	1 PA6GF30	9005 Black - standard	0 Without logo
1	YES	2 1.51-2 mm	2 Brass *	2 PA6GF30 V0 *	RAL On request *	1 Sticker E-L
		3 2.01-2.5 mm				2 Client's logo
						3 Pad printing

EXAMPLE: H826 - 0 - 1 - 1 - 1 - 1 - 9005 - 1

- Custom made logo (sticker, pad printing or logo done during injection moulding phase) - on request only (please contact our office)
- Lock type euro-profile cylinder
- Sliding dust cover version
- Pop out function
- Available with 1-, 2-, 3-point cam or rod latch system
- Europrofile cylinder not included in the set, it must be ordered separately
- * Available on request only (please contact with office)

H827 SWINGHANDLE



X=17.8 mm with 1-, 2- or 3-point cam (for panel thickness 1.7-2.5 mm)
X=24.5 mm with rod latch system



H827	IP65	Panel thickness	Pivot	Material	Colour	Sticker with logo
0	NO	1 1-1.5 mm	1 ZAMAK	1 PA6GF30	9005 Black – standard	0 Without logo
1	YES	2 1.51-2 mm	2 Brass *	2 PA6GF30 V0 *	RAL On request *	1 Sticker E-L
		3 2.01-2.5 mm				2 Client's logo
						3 Pad printing

Locking type	Key's quantity	Key's variant
1 Lock without key	Please write the quantity of the keys, standard 2 pcs	KTP One code (possibility to choose with one of the following codes) ** 1333, 2433A, 1242E, 405, 455, 9081
2 Lock with key only		KTD Different codes (key's series: R, 9000, 9000M***)

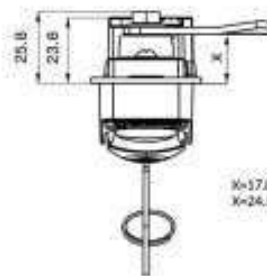
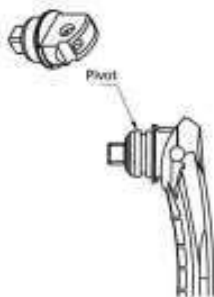
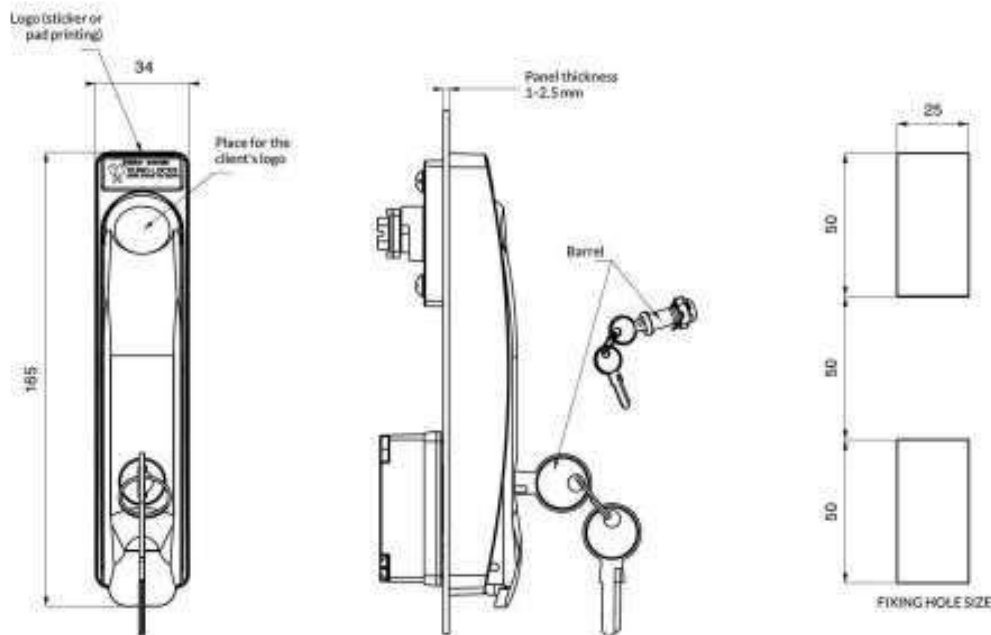
EXAMPLE: H827 - 0 - 1 - 1 - 1 - 1 - 9005 - 1 - 1 - 2 - KTP 1333

- Custom made logo (sticker, pad printing or logo done during injection moulding phase) - on request only (please contact our office)
- Locking type: barrel
- Sliding dust cover version

- Pop out function
- Available with 1-, 2-, 3-point cam or rod latch system
- * Available on request only (please contact with office)
- ** Please define the exact key code for each lock when ordering.
- *** "Master" Key System available only for 9000M series



H829 SWINGHANDLE



X=17.8 mm with 1-, 2- or 3-point cam (for panel thickness 1.7-2.5 mm)
X=24.5 mm with rod latch system

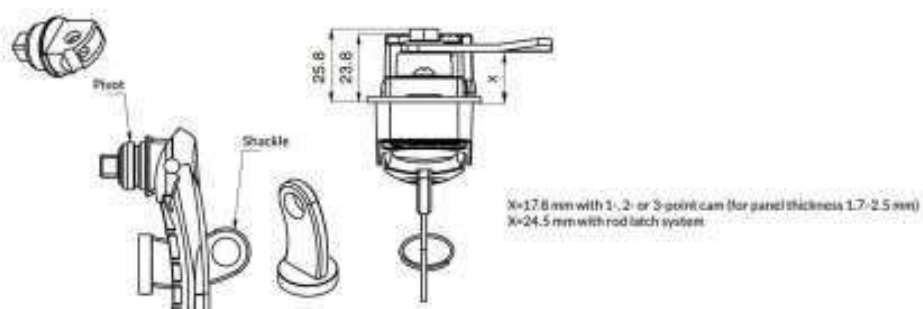
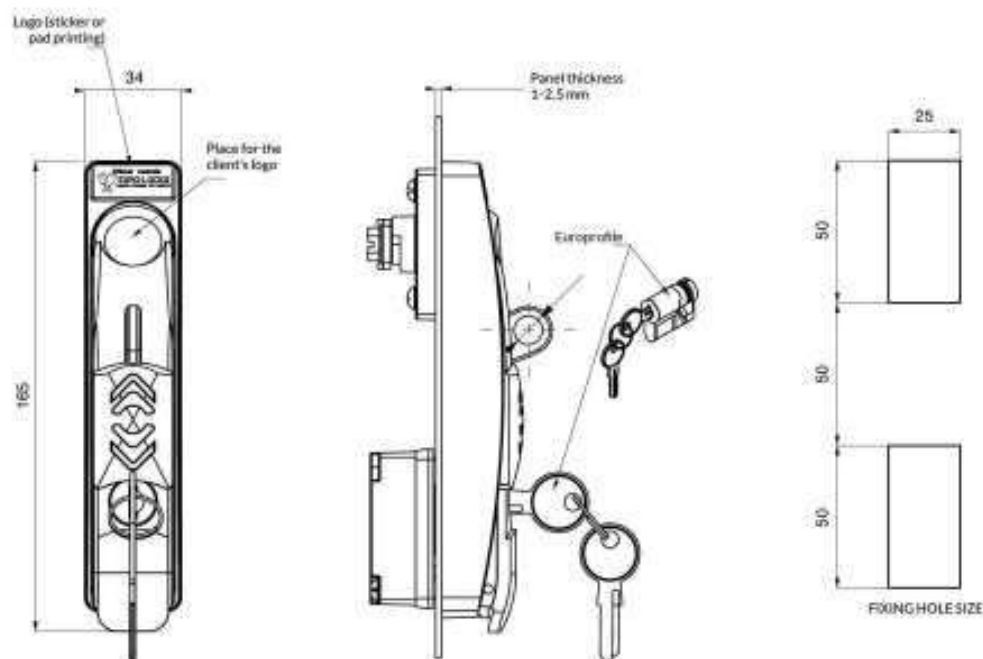
H829	IP65	Panel thickness	Pivot	Material	Colour	Sticker with logo
	0 NO	1 1-1.5 mm	1 ZAMAK	1 PA6GF30	9005 Black - standard	0 Without logo
		2 1.51-2 mm	2 Brass*	2 PA6GF30 V0*	RAL On request*	1 Sticker E-L
		3 2.01-2.5 mm				2 Client's logo
						3 Pad printing
	Locking type	Key's quantity	Key's variant			
1	Lock without key	Please write the quantity of the keys, standard 2 pcs	KTP	One code (possibility to choose with one of the following codes)** 1333, 2433A, 1242E, 405, 455, 9081		
2	Lock with key only		KTD	Different codes (key's series: R, 9000, 9000M***)		

EXAMPLE: H829 - 0 - 1 - 1 - 1 - 9005 - 1 - 1 - 2 - KTP 1333

- Custom made logo (sticker, pad printing or logo done during injection moulding phase) - on request only (please contact our office)
- Locking type: barrel
- Pop out function

- Available with 1-, 2-, 3-point cam or rod latch system
- * Available on request only (please contact with office)
- ** Please define the exact key code for each lock when ordering
- *** "Master" Key System available only for 9000M series

H828 SWINGHANDLE



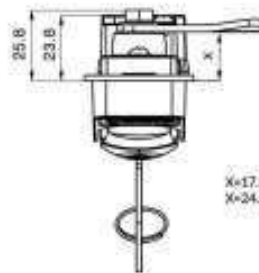
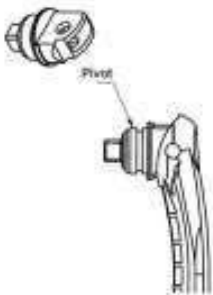
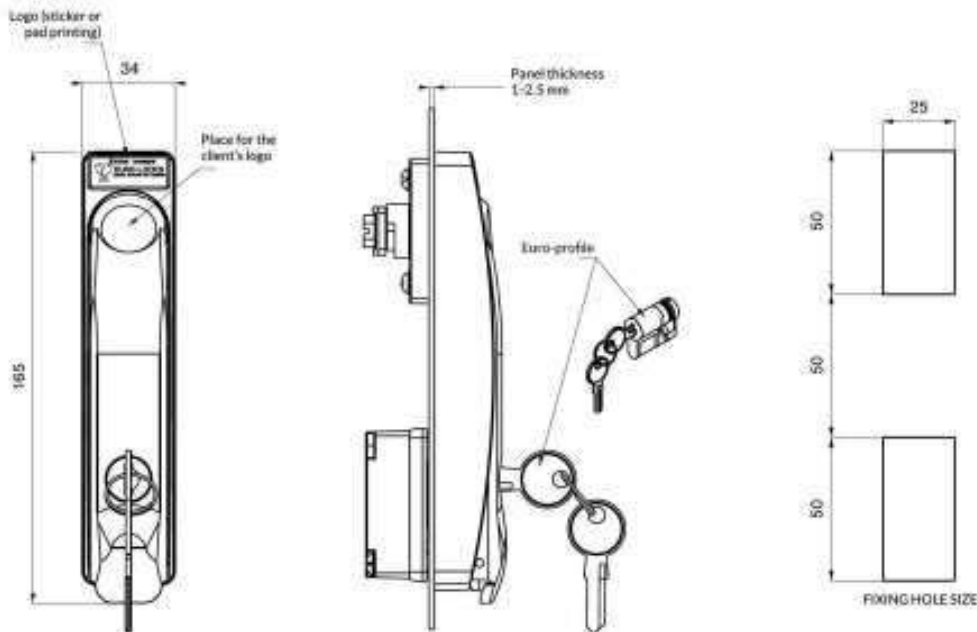
H828	IP54	Panel thickness	Pivot	Material	Colour	Sticker with logo
0	NO	1 1-1.5 mm	1 ZAMAK	1 PA6GF30	9005 Black - standard	0 Without logo
2	YES	2 1.51-2 mm	2 Brass *	2 PA6GF30 V0 *	RAL On request *	1 Sticker E-L
		3 2.01-2.5 mm				2 Client's logo
						3 Pad printing

EXAMPLE: H828 - 0 - 1 - 1 - 1 - 1 - 9005 - 1

- Prepared for additional locking by padlock
- Schackle's diameter: max. 10 mm
- Custom made logo (sticker, pad printing or logo done during injection moulding phase) - on request only (please contact our office)
- Lock type euro-profile cylinder
- **Sliding dust cover version**
- **Pop out function**
- Available with 1-, 2-, 3-point cam or rod latch system
- Europrofile cylinder not included in the set, it must be ordered separately
- * Available on request only (please contact with office)



H830 SWINGHANDLE



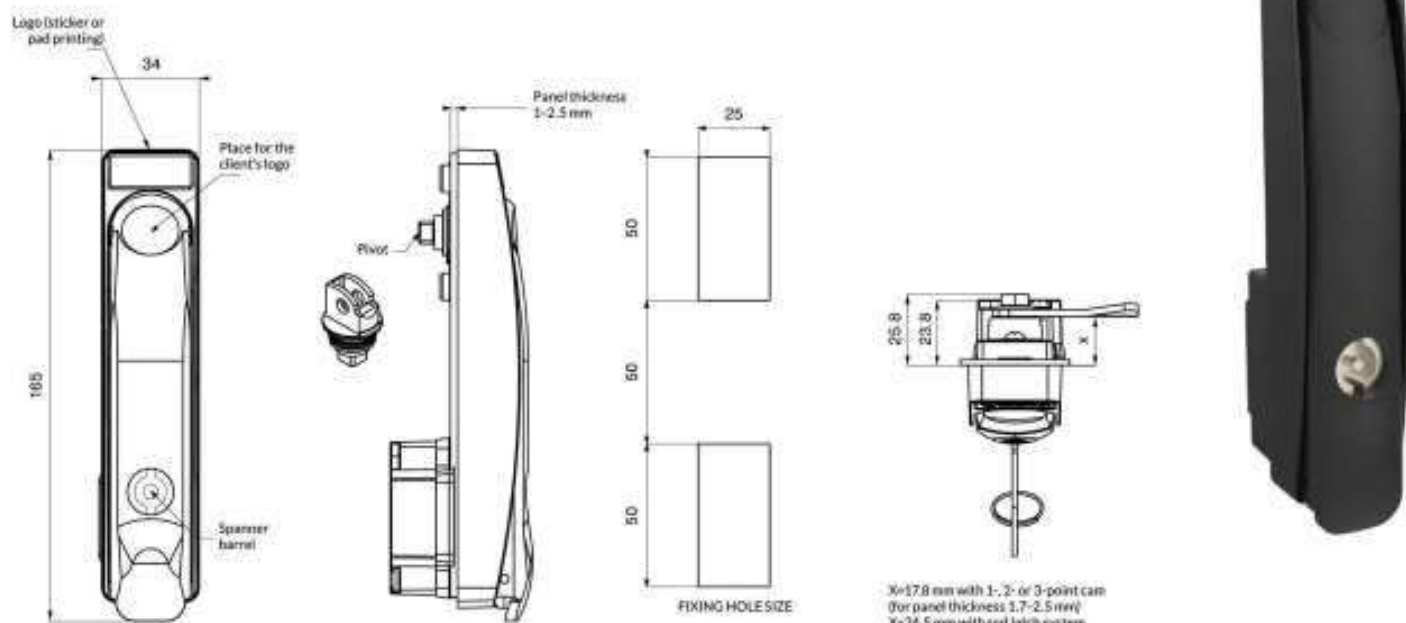
X=17.8 mm with 1-, 2- or 3-point cam (for panel thickness 1.7-2.5 mm)
X=24.5 mm with rod latch system

H830	IP65	Panel thickness	Pivot	Material	Colour	Sticker with logo
0	NO	1 1-1.5 mm	1 ZAMAK	1 PA6GF30	9005 Black - standard	0 Without logo
		2 1.51-2 mm	2 Brass *	2 PA6GF30 V0 *	RAL On request *	1 Sticker E-L
		3 2.01-2.5 mm				2 Client's logo
						3 Pad printing

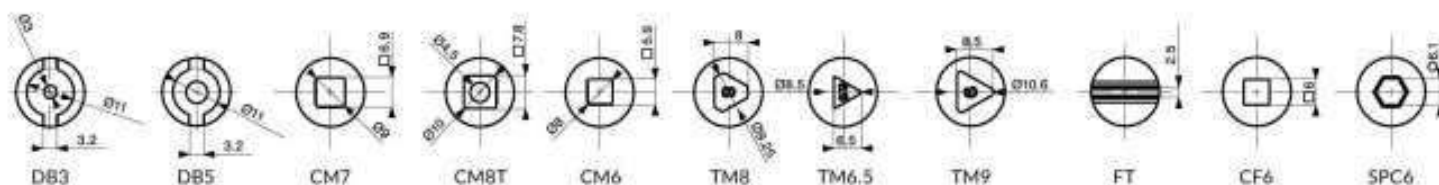
EXAMPLE: H830 - 0 - 1 - 1 - 1 - 1 - 9005 - 1

- Custom made logo (sticker, pad printing or logo done during injection moulding phase) - on request only (please contact our office)
- Lock type euro-profile cylinder
- Pop out function
- Available with 1-, 2-, 3-point cam or rod latch system
- Europrofile cylinder not included in the set, it must be ordered separately
- * Available on request only (please contact with office)

H812 SWINGHANDLE WITH SPANNER BARREL



Available barrel shapes



H812	-	IP65	-	Panel thickness	-	Pivot	-	Material	-	Colour	-	Sticker with logo
0	NO	1	1-1.5 mm	1	ZAMAK	1	PA6GF30	9005	Black - standard	0	Without logo	
1	YES	2	1.51-2 mm	2	Brass*	2	PA6GF30 VO*	RAL	On request*	1	Sticker E-L	
		3	2.01-2.5 mm							2	Client's logo	
										3	Pad printing	

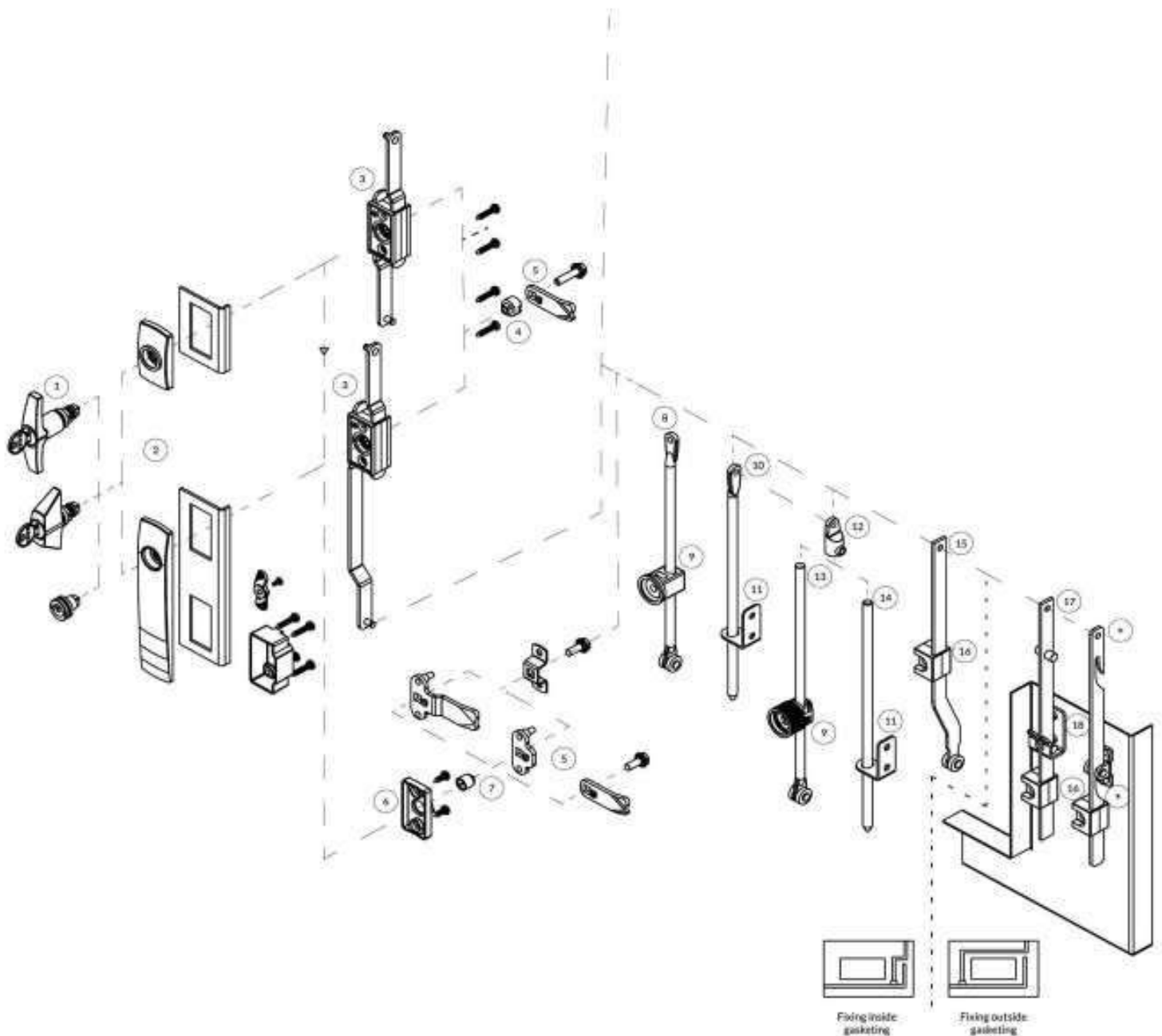
-	Locking type	-	Type of spanner barrel	-	Shapped barrel finish
1	Lock without key	DB3	TM6.5	2A	Chrome plated
2	Lock with key only	DB5	TM9	6A	Zinc plated
		CM7	FT	7B	Nickel plated
		CM8T	CF6	8H	KTL
		CM6	SPC6		
		TM8			

EXAMPLE: H812 - 0 - 1 - 1 - 1 - 1 - 9005 - 1 - 1 - DB3 - 2A

- Custom made logo (sticker, pad printing or logo done during injection moulding phase) - on request only (please contact our office)
- Locking type: spanner barrel
- Pop out function
- Available with 1-, 2-, 3-point cam or rod latch system
- * Available on request only (please contact with office)

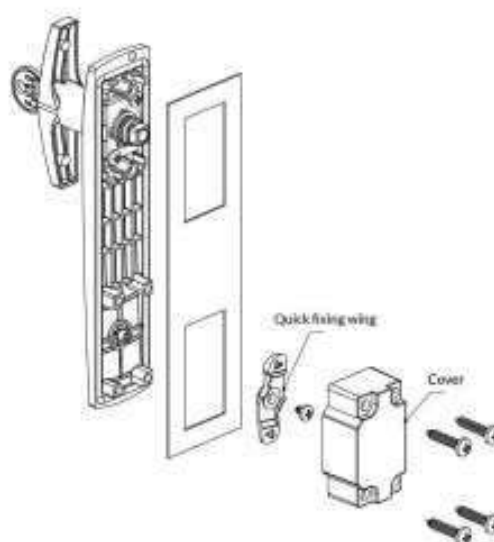
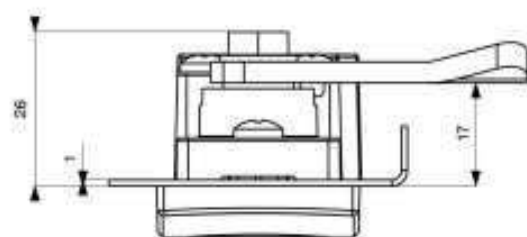
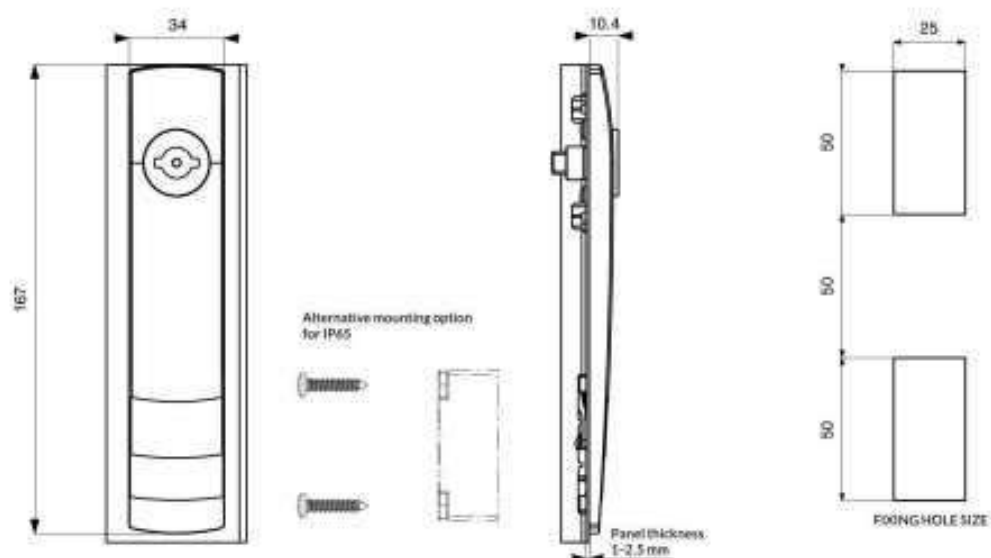


PROGRAM 50×50×50 and 50×25



Ref.	Symbol	Description	Page
1, 2	H808, H807, H805, H802, H405, H407	Escutcheons with spanner barrel, T-handle, W-handle	14-18
3, 4, 6, 7	W101, W204, P3152, P3150, P3149	Accessories for escutcheons	19-20
5	1, 2, 3-point cams	Cams	21-22
8, 10, 13, 14, 15, 17	PR10, PR11, PR3803, PR3612, PR3811, PR3801, PR3813, PR2	Rods	23-25
9, 11, 12, 16, 18	W108-X, W109-X, W178, W102, W187, W147	Accessories for rods	26-28

H807 ESCUTCHEON WITH SPANNER BARREL



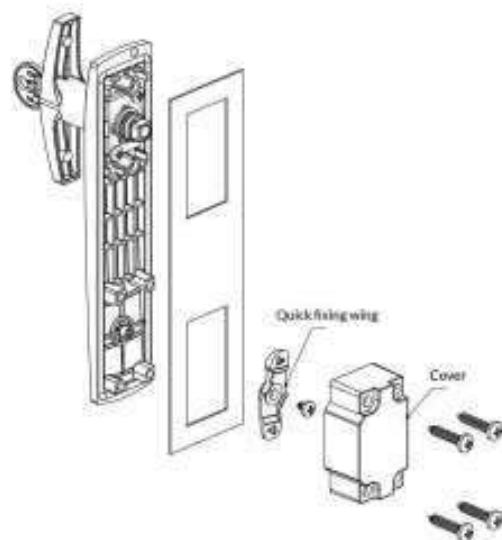
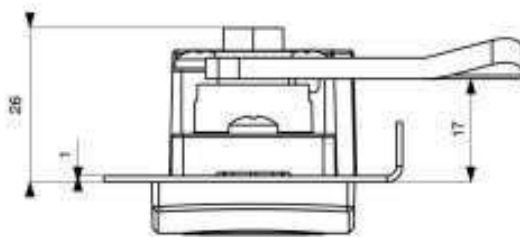
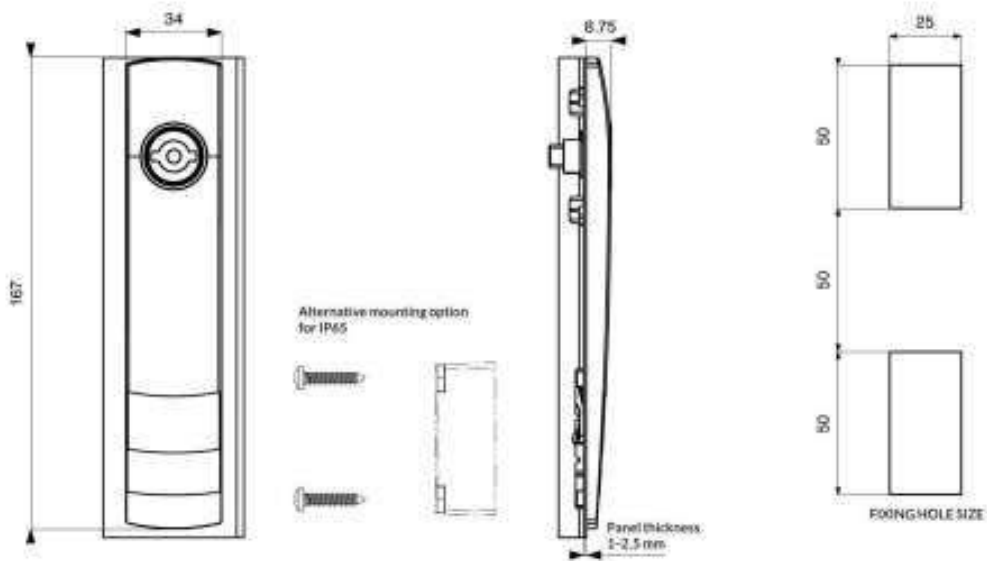
H807	IP65		Panel thickness		Type of spanner barrel		Barrel finish		Escutcheon's material		Escutcheon's colour		Pad printing logo	
	0	NO	10	min. 1,0 mm	DB5	8H	KTL	1	PA6GF30	9005	Black - standard	0	With logo	
1	YES	11	1,1 mm		6L	Zinc plated	2	PA6GF30 V0*	RAL	On request*	1	E-L logo		
		12	1,2 mm									2	Client's logo*	
		-	-											
		25	max. 2,5 mm											

EXAMPLE: H807 - 1 - 10 - DB58H - 19005 - 0

- Custom pad printed logo - on request only (please contact our office)
- Locking type: spanner barrel
- Available with 1-, 2-, 3-point cam or rod latch
- Key extraction is possible only when lock is closed
- IP65 only with cover
- * Available on request only (please contact with office)



H808 ESCUTCHEON WITH SPANNER BARREL

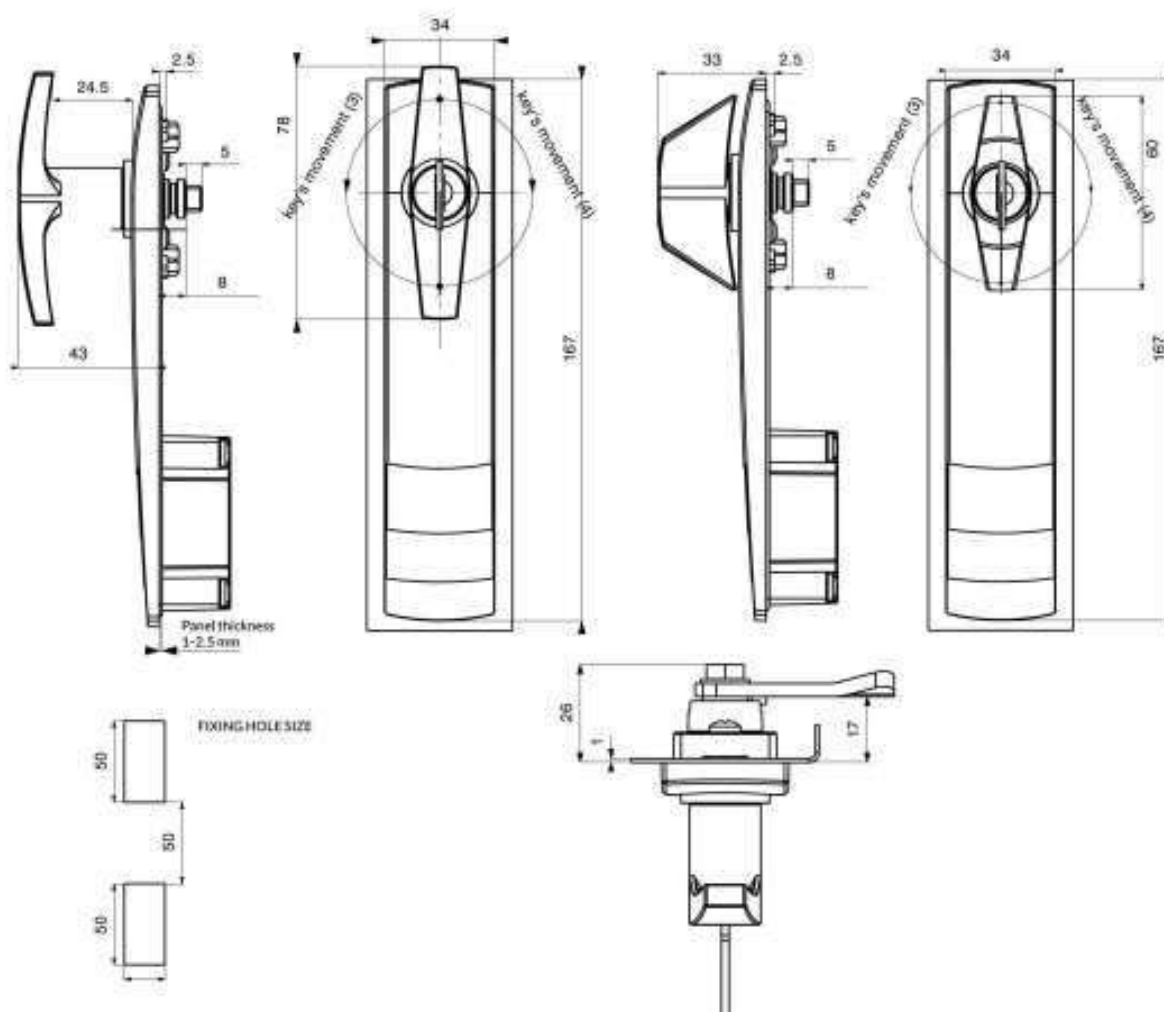


H808	IP65		Panel thickness		Type of spanner barrel		Barrel finish		Escutcheon's material		Escutcheon's colour		Pad printing logo	
	0	NO	10	min. 1,0 mm	DB5	8H	KTL	1	PA6GF30	9005	Black - standard	0	With logo	
1	YES	11	1,1 mm		6L	Zinc plated	2	PA6GF30 V0*	RAL	On request*	1	E-L logo		
		12	1,2 mm									2	Client's logo*	
		-	-											
		25	max. 2,5 mm											

EXAMPLE: H808 - 1 - 10 - DB58H - 19005 - 0

- Custom pad printed logo - on request only (please contact our office)
- Locking type: spanner barrel
- Available with 1-, 2-, 3-point cam or rod latch
- IP65 only with cover
- * Available on request only (please contact with office)

H407 ESCUTCHEON WITH T AND W-HANDLE



H407	IP65	Panel thickness	Type of handle	Handle finish	Escutcheon's material	Escutcheon's colour
0	NO	10 min. 1,0 mm.	1 T-handle	1B Powder coating	1 PA6GF30	9005 Black - standard
1	YES	11 1,1 mm	2 W-handle	8H KTL	2 PA6GF30 V0	RAL On request *
		12 1,2 mm	3 T-handle non locking			
		- -	4 W-handle non locking			
		25 max. 2,5 mm				

Pad printing logo	Key's movement	Key's quantity	Key's variant
0 With logo	3 180° clockwise	0 Without keys	KTP XXXX
1 E-L logo	4 180° anticlockwise	1 One key	KTDR XXXX
2 Client's logo *		2 Two keys	

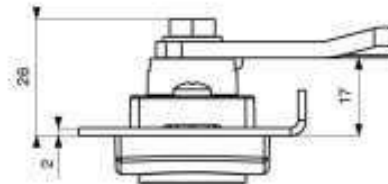
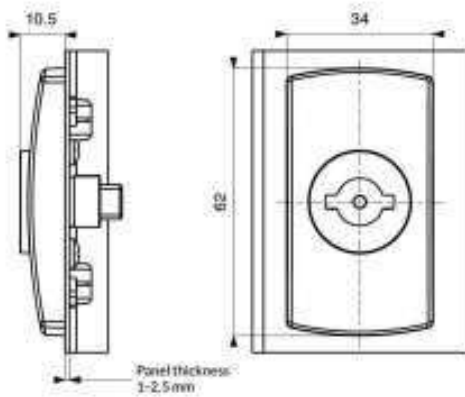
EXAMPLE:
H407 locking H407 - 1 - 10 - 11B - 19005 - 0 - 3 - 2 - KTDR

EXAMPLE:
H407 non locking H407 - 0 - 15 - 48H - 19005 - 1

- Custom pad printed logo - on request only (please contact our office)
- Locking type: T-handle or W-handle
- Quantity of combination: 500 (R series)
- Available with 1-, 2-, 3-point cam or rod latch
- IP65 only with cover
- Handle with removable barrel, without IP65 - only for request
- * Available on request only (please contact with office)



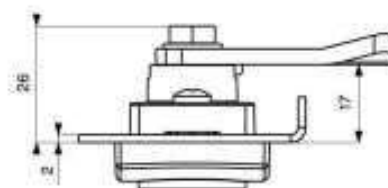
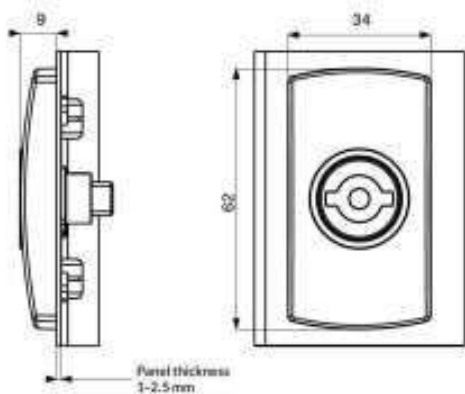
H802 SHORT ESCUTCHEON WITH SPANNER BARREL



H802	IP65		Panel thickness		Type of spanner barrel		Barrel finish		Escutcheon's material		Escutcheon's colour		Pad printing logo	
	0	NO	10	min. 1,0 mm	DB5	8H	KTL	1	PA6GF30	9005	Black - standard	0	With logo	
1	YES	11	1,1 mm		6L	Zinc plated	2	PA6GF30 V0	RAL	On request *	1	E-L logo		
		12	1,2 mm								2	Client's logo *		
		-	-											
		25	max. 2,5 mm											

- Custom pad printed logo – on request only (please contact our office)
- Locking type: spanner barrel
- Available with 1-, 2-, 3-point cam or rod latch
- Key extraction is possible only when lock is closed
- * Available on request only (please contact with office)

H805 SHORT ESCUTCHEON WITH SPANNER BARREL

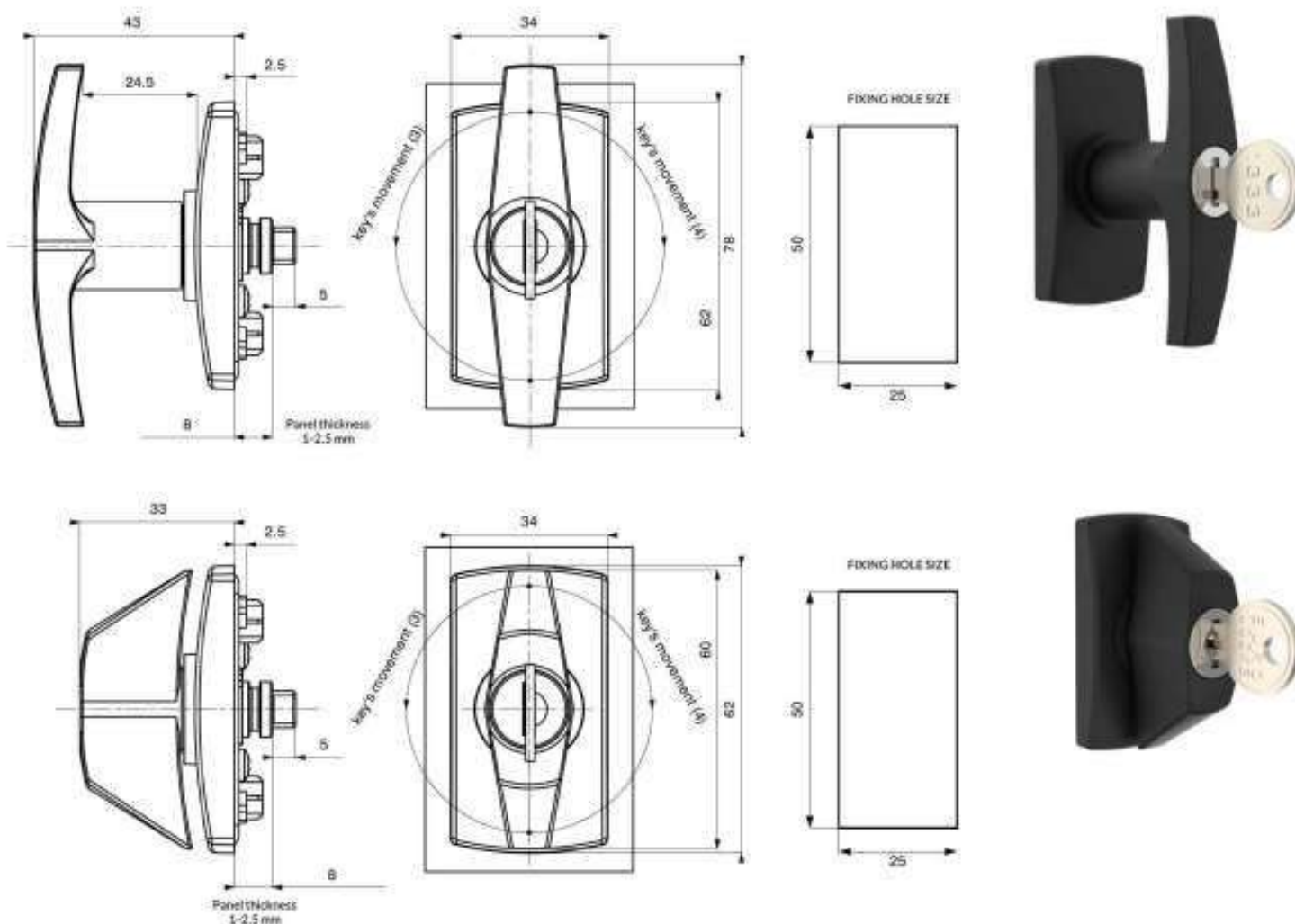


H805	IP65		Panel thickness		Type of spanner barrel		Barrel finish		Escutcheon's material		Escutcheon's colour		Pad printing logo	
	0	NO	10	min. 1,0 mm	DB5	8H	KTL	1	PA6GF30	9005	Black - standard	0	With logo	
1	YES	11	1,1 mm		6L	Zinc plated	2	PA6GF30 V0	RAL	On request *	1	E-L logo		
		12	1,2 mm								2	Client's logo *		
		-	-											
		25	max. 2,5 mm											

EXAMPLE: H805 – 1 – 10 – DB58H – 19005 – 0

- Custom pad printed logo – on request only (please contact our office)
- Locking type: spanner barrel
- Available with 1-, 2-, 3-point cam or rod latch
- * Available on request only (please contact with office)

H405 SHORT ESCUTCHEON WITH T AND W-HANDLE



H405	IP65	Panel thickness	Type of handle	Handle finish	Escutcheon's material	Escutcheon's colour
0	NO	10 min. 1,0 mm.	1 T-handle	1B Powder coating	1 PA6GF30	9005 Black - standard
1	YES	11 1,1 mm	2 W-handle	8H KTL	2 PA6GF30 V0	RAL On request *
		12 1,2 mm	3 T-handle non locking			
		- -	4 W-handle non locking			
		25 max. 2,5 mm				

Pad printing logo	Key's movement	Key's quantity	Key's variant
0 With logo	3 180° clockwise	0 Without keys	KTP XXXX
1 E-L logo	4 180° anticlockwise	1 One key	KTDR XXXX
2 Client's logo *		2 Two keys	

EXAMPLE:
H405 locking H405 - 1 - 10 - 11B - 19005 - 0 - 3 - 1 - KTP1333

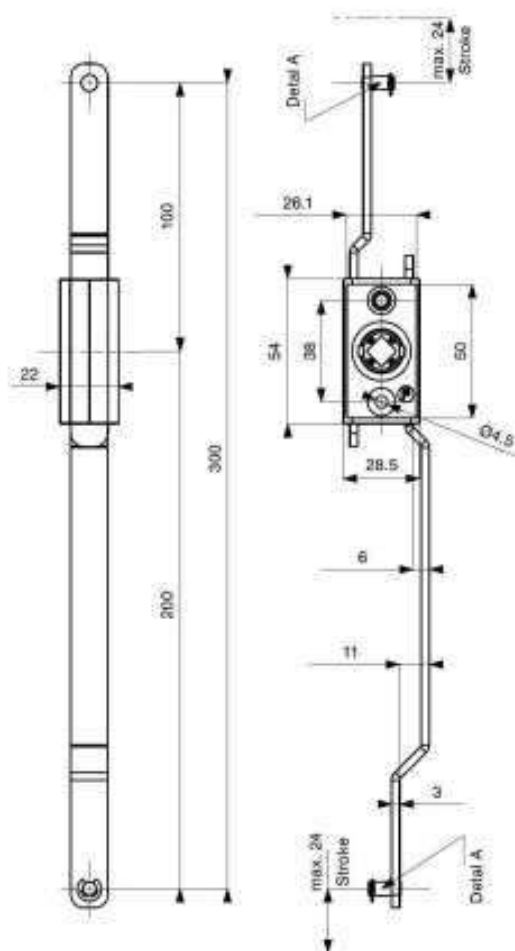
EXAMPLE:
H405 non locking H405 - 0 - 15 - 48H - 19005 - 1

- Custom pad printed logo - on request only (please contact our office)
- Locking type: T-handle or W-Handle
- Quantity of combination: 500 (R series)

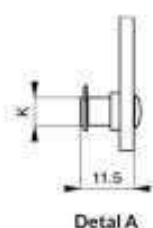
- Available with 1-, 2-, 3-point cam or rod latch
- Handle with removable barrel, without IP65 - only for request
- * Available on request only (please contact with office)



W101 ROD CONTROL



Stroke value	
angle	stroke [mm]
135°	23
90°	16



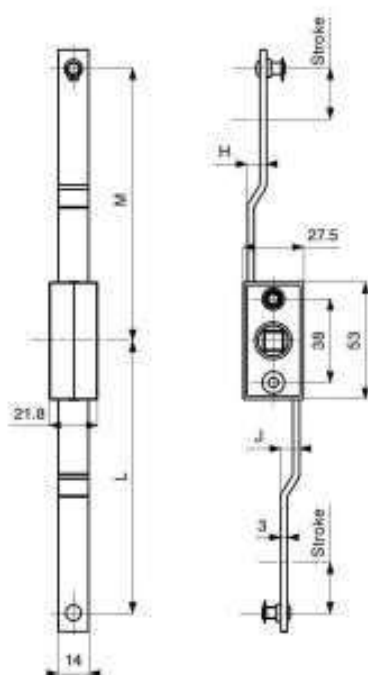
W101	-	K [mm]
1		Ø5
2		Ø6



EXAMPLE: W101 - 1

- Rod control material: ZAMAK
- Rod control finish: zinc plated
- Rod material: steel
- Rod finish: zinc plated

W198 ROD CONTROL



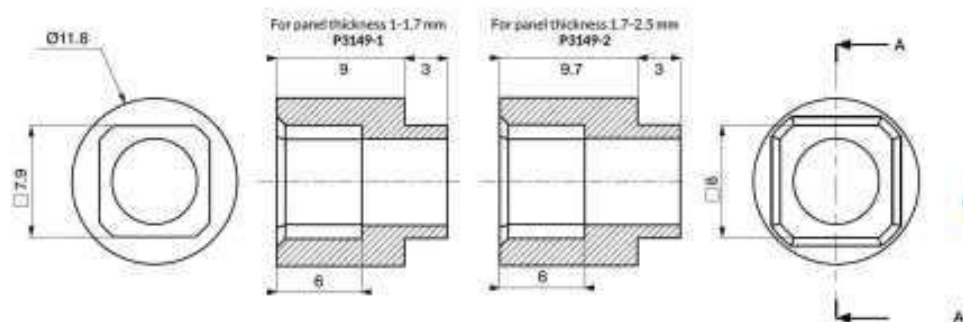
Stroke value	
angle	stroke [mm]
135°	23
90°	16

W204	-	K [mm]
1		Ø5
2		Ø6



EXAMPLE: W204 - 2

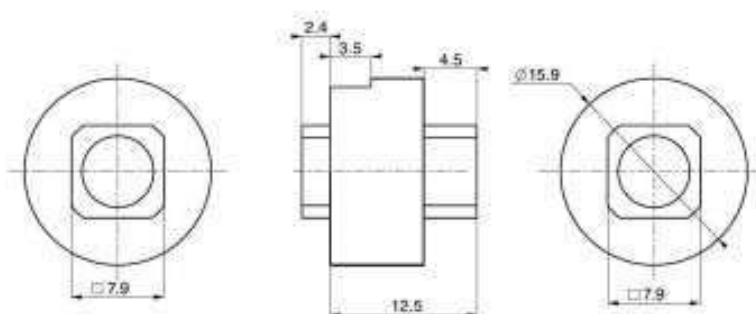
P3149 ADAPTER



- Material: ZAMAK
- Finish: zinc plated
- Adapter used for handles equipped with 1-, 2- or 3-point cam



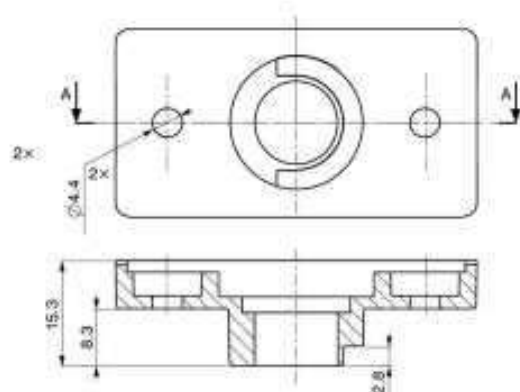
P3152 ADAPTER



- Material: ZAMAK
- Finish: zinc plated
- Adapter used for handles equipped with rod control and 1-point cam (optionally)



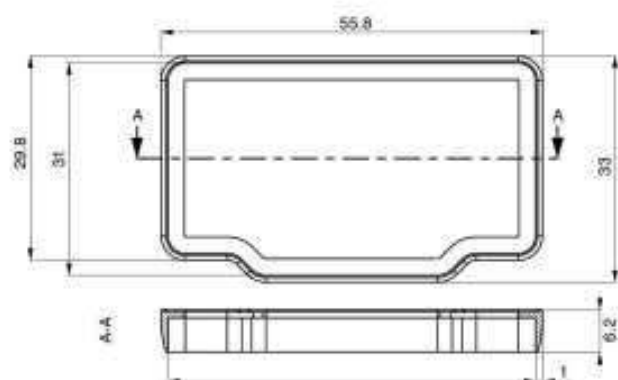
P3150 COVER



- Cover used for cams in a system without a rod control system
- Material: ZAMAK
- Finish: zinc plated



P9002 GASKET

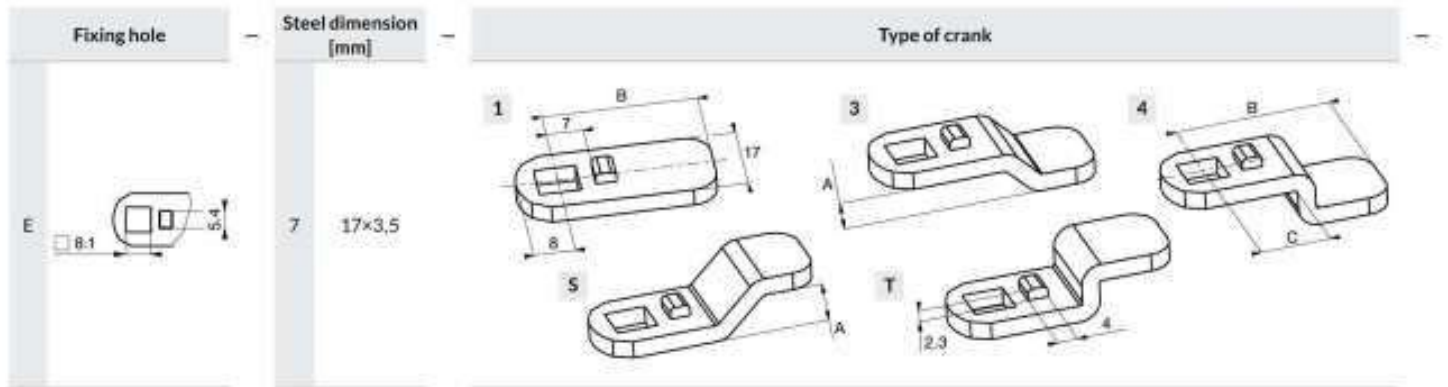


- Gasket used in swinghandles with IP
- Material: EPDM 70



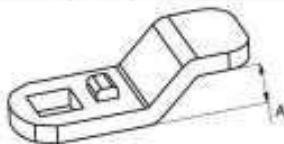


1-POINT CAMS



Size A Dim 'A' expressed in 1/64 = 0.4 mm	Size B [mm]	Additional bending	
00 FLAT		DB	
06 2.4 mm			
08 3.2 mm			DX
12 4.8 mm			
14 5.6 mm			
16 6.4 mm			
18 7.2 mm			
20 8.0 mm			
24 9.5 mm			
26 10.4 mm			
32 12.7 mm			
64 25.4 mm			

Recommended angle 90°, A < 6 recommended angle 45°



ATTENTION:

45° CRANK: min. B = 34 mm without DB DX
min. B = 40 mm with DB DX

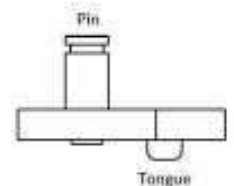
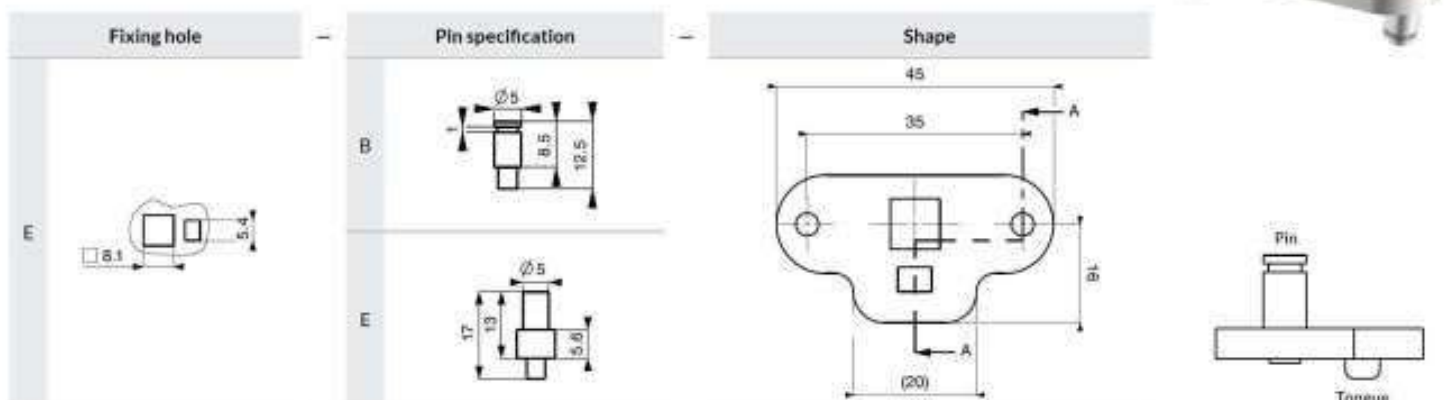
90° CRANK: min. B = 30 mm without DB DX
min. B = 37 mm with DB DX

DX cam in configuration with rod control $C_{min} = 30$ mm

EXAMPLE: E - 7 - 4 - 20 - 45 - DB

- Material: steel
- Finish: zinc plated

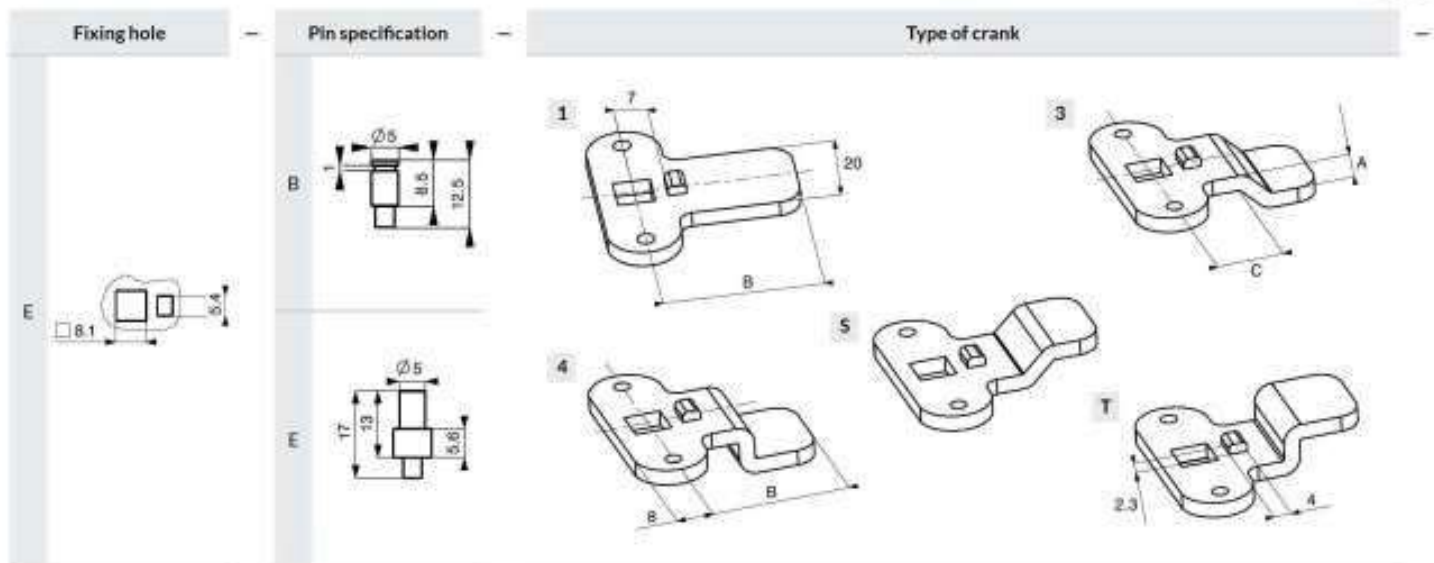
2-POINTS CAM



EXAMPLE: E - B - 1

- Material: steel
- Finish: zinc plated

3-POINTS CAMS



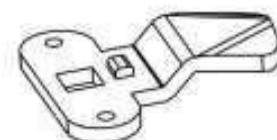
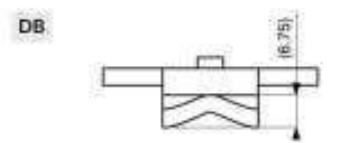
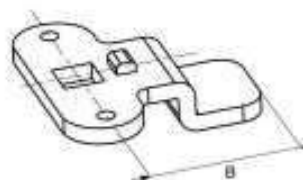
Size A
Dim "A" expressed in 1/64 = 0.4 mm

	Size A
00	FLAT
06	2.4 mm
08	3.2 mm
12	4.8 mm
14	5.6 mm
16	6.4 mm
18	7.2 mm
20	8.0 mm
24	9.5 mm
26	10.4 mm
32	12.7 mm
64	25.4 mm

Recommended angle 90°, A < 6 recommended angle 45°



Size B [mm] **Additional bending**

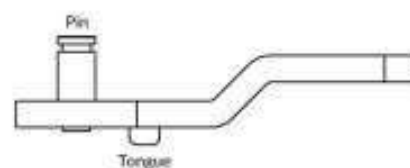


ATTENTION:

45° CRANK: min. B = 34 mm without DB DX
min. B = 40 mm with DB DX

90° CRANK: min. B = 30 mm without DB DX
min. B = 37 mm with DB DX

PIN'S ASSEMBLY OPPOSITE TO THE TONGUE



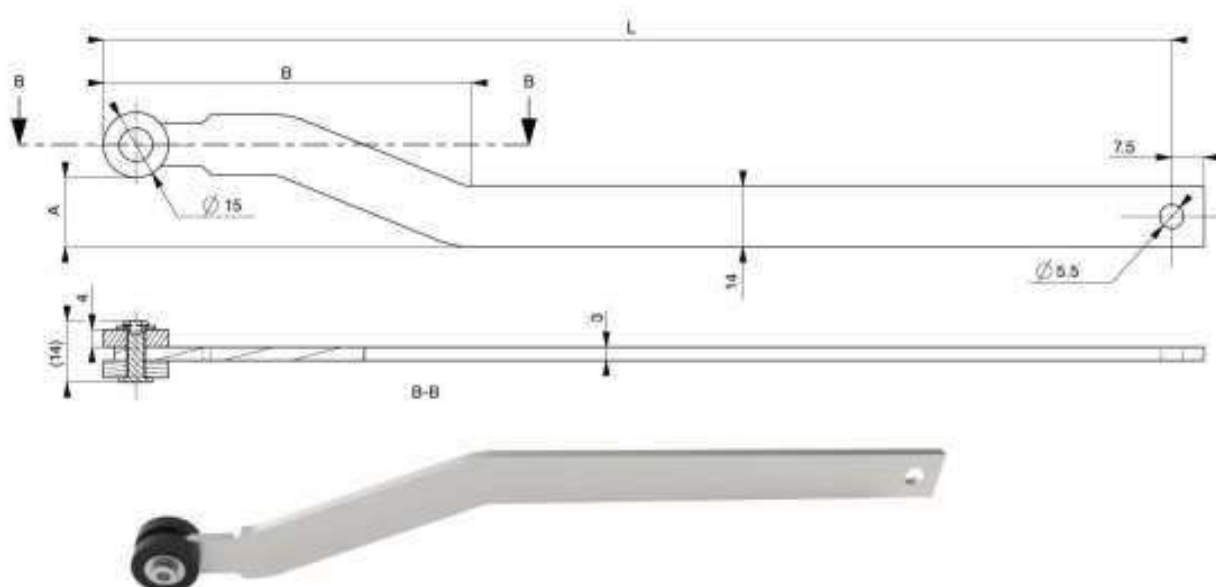
EXAMPLE: E - B - 1 - 00 - 45 - DB

- Material: steel
- Finish: zinc plated

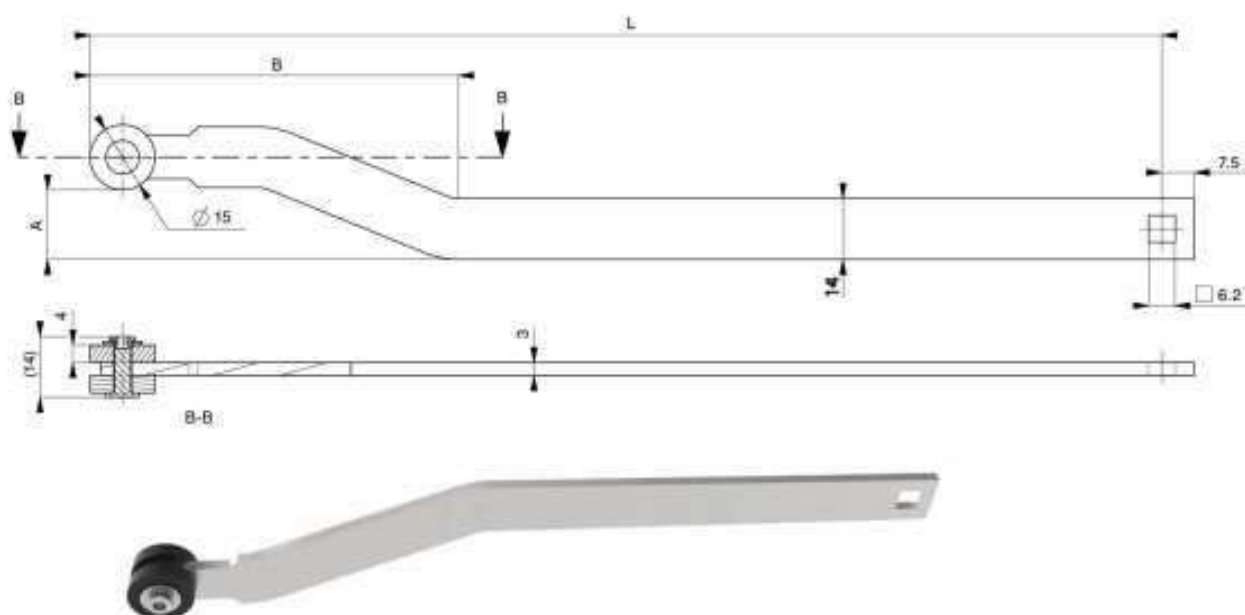


PR1 RODS

PR10-A-B-L



PR11-A-B-L

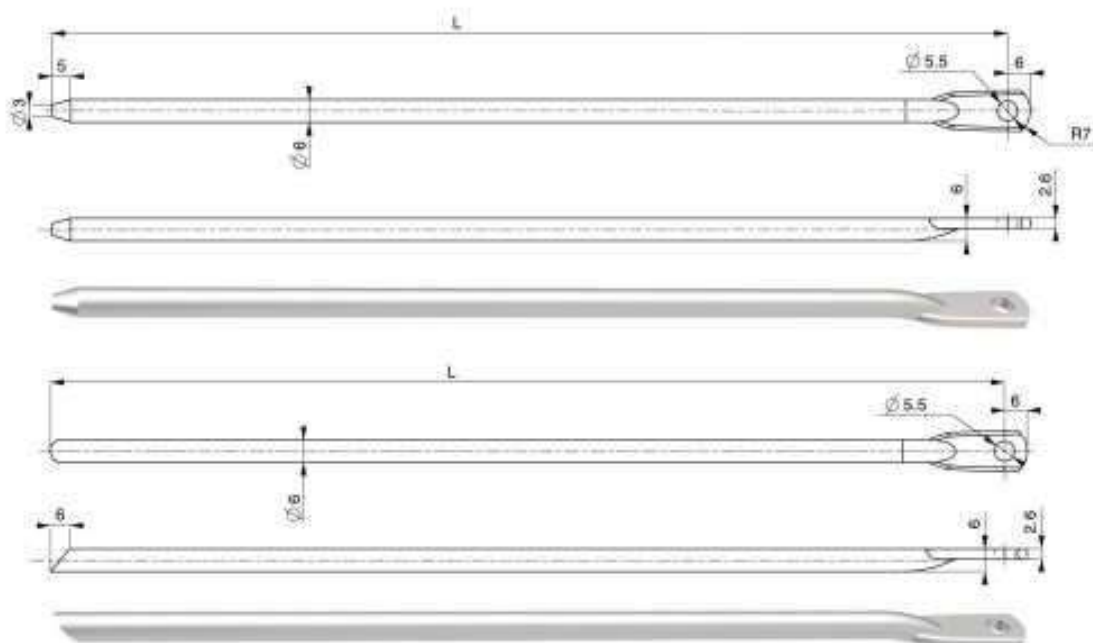


PR1	Beginning of the rod	A [mm]	B [mm]	L (length) [mm]
0	Round hole 5.5 mm	16	85	
1	Square hole 6.2 mm	21		
	Other *			

EXAMPLE: PR1 - 0 - 16 - 85 - 100

- Material: steel.
- Finish: zinc plated
- * Other dimensions available on request (please contact with office)

PR36 RODS



PR3611-L



PR3612-L

PR3	Diameter	Beginning of the rod	End of the rod	L (length) [mm]
6	0	Cut for adapter	1	Cone
	1	With eye $\varnothing 5.5$ mm	2	Cut 45°

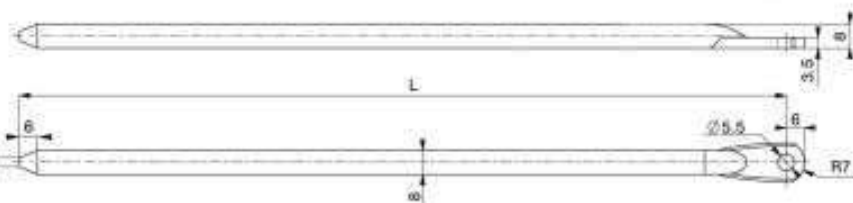
EXAMPLE: PR3-6-1-1-100

- Material: steel
- Finish: zinc plated.

PR38 RODS



PR3801-L



PR3811-L

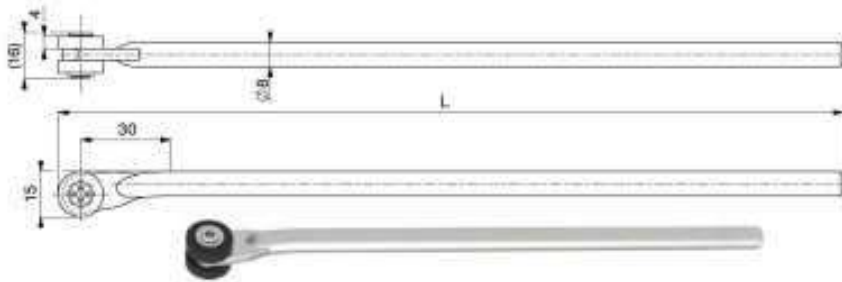
PR3	Diameter	Beginning of the rod	End of the rod	L (length) [mm]
8	0	Cut for adapter	1	Cone
	1	With eye $\varnothing 5.5$ mm		

EXAMPLE: PR3-8-0-1-100

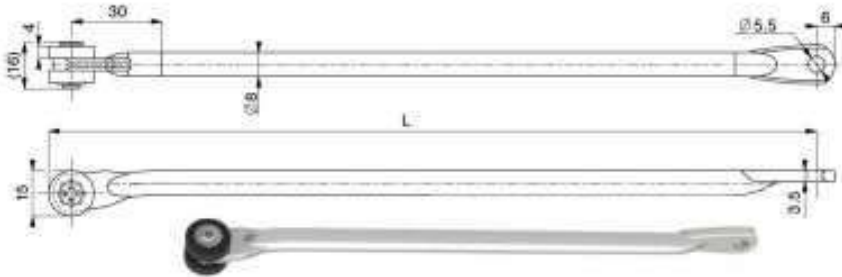
- Material: steel
- Finish: zinc plated.



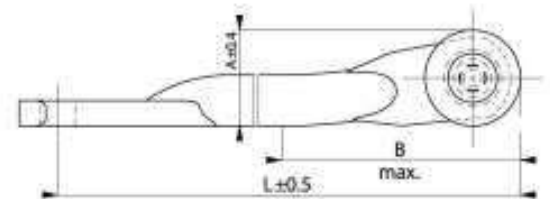
PR38 RODS WITH ROLLER



PR3803-A-B-L



PR3813-A-B-L

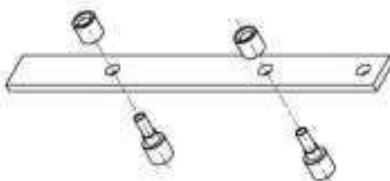
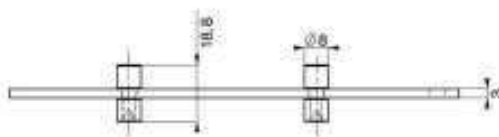
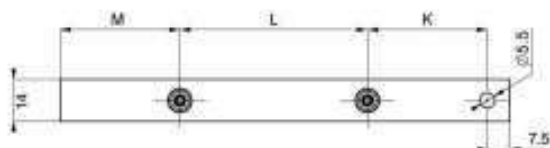


PR3	Diameter	Beginning of the rod	End of the rod	A [mm]	B [mm]	L (length) [mm]
	8	0 Cut for adapter	3 PA rollers - 15 mm	11.5	0	
		1 With eye $\varnothing 5.5$ mm		15	37	
				24	47	

EXAMPLE: PR3 - 8 - 0 - 3 - 15 - 37 - 100

- Material: steel
- Finish: zinc plated

PR2 RODS WITH PRESSURE ROLLERS



Recommended

Door height [mm]	M [mm] *	L [mm]	K [mm]
600-1200	75	126.5	-
1200-1600	75	276.5	-
1600-1900	75	425	101.5
1900-2000	75	525	101.5

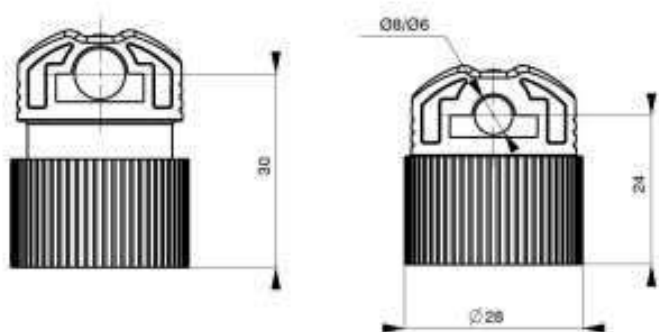
* no choice of another value.

PR2	M [mm]	L [mm]	K [mm]
	Dimension between beginning of the rod and first roller axle	Dimension between axes of rollers	Dimension between roller and rod's fixing hole

EXAMPLE: PR2 - 75 - 425 - 100

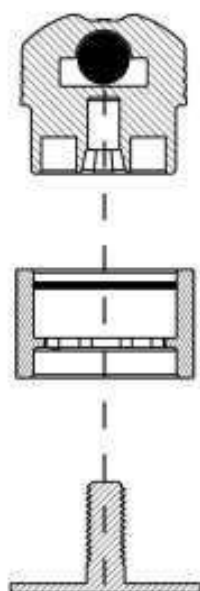
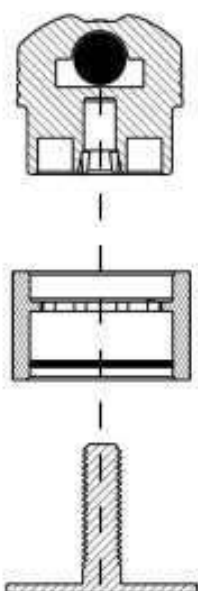
- Please specify parameters M, L, K
- Material of rod: steel
- Finish of rod: zinc plated
- Material of roller: Brass
- The quantity of brass rollers can be changed on request (please contact with office)

W147 ROD GUIDE



Dimension 30 mm

Dimension 24 mm



Mounting method



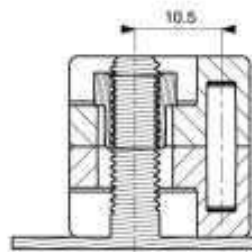
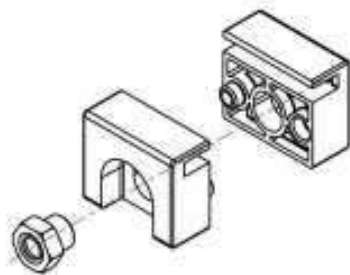
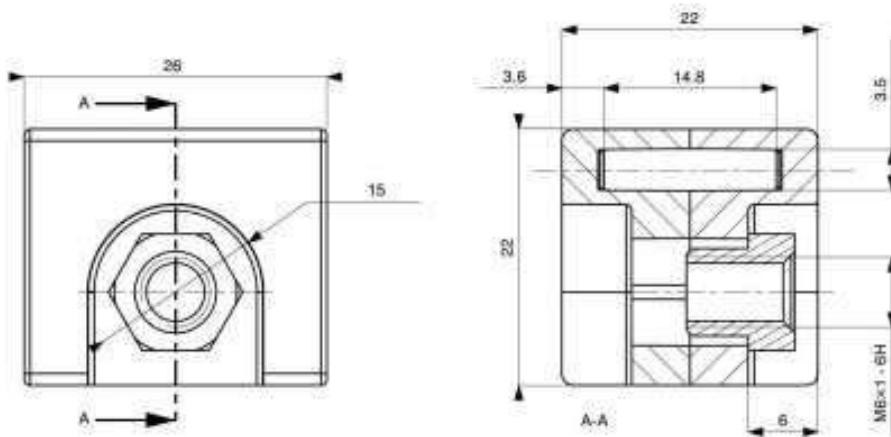
W147	Material		Colour		Rod diameter	
	PB	PA6GF30	9005	Black	1	Ø 6
		7035	Grey	2	Ø 8	
		Other RAL	On request *			

EXAMPLE: W147 – PB – 9005 – 2

- Material: PA6GF30
- One solution for two different distances 24 or 30 mm thanks to the special adjusting ring
- Usable for weld studs M6 :
 - for distance 30 mm suggested length of studed bolt – 22 mm
 - for distance 24 mm suggested length of studed bolt – 16 mm
- Breaking strength: 160 kg
- For PR36 and PR38 rods
- * Available on request only (please contact with office)



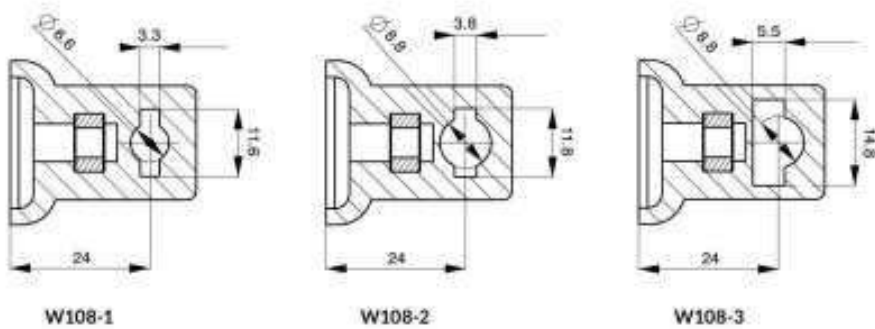
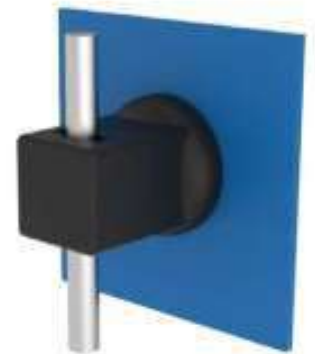
W187 ROD GUIDE



MOUNTING METHOD

- Material: PA6GF30
- For PR1 and PR2 rods only
- Nut M6 included in the set

W108 ROD GUIDE



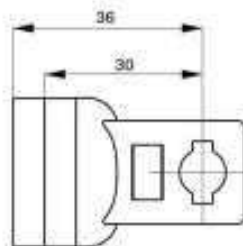
W108-1

W108-2

W108-3



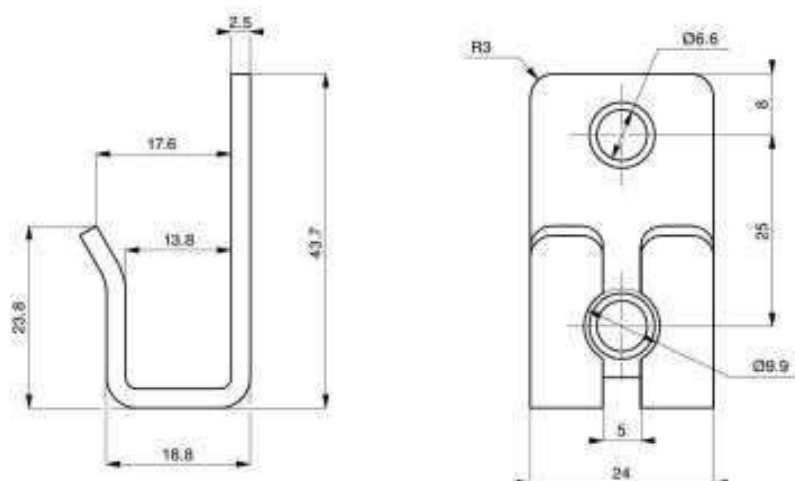
W104



Additional distance washer W104 can be used to increase distance between door and rod's centre axis

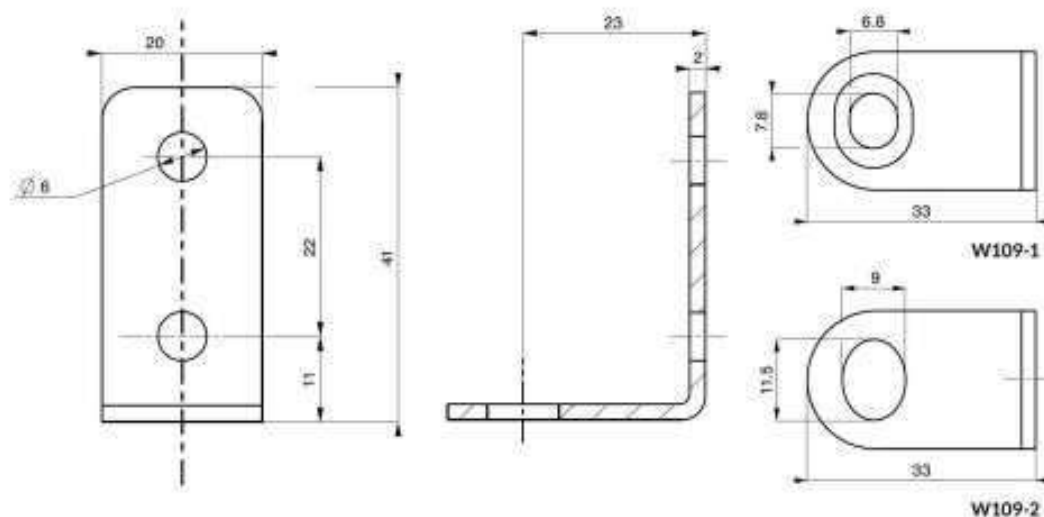
- Material: PA6GF30
- Rod guide W108-1 for rods PR36
- W108-2 for rods PR38, except PR3813
- W108-3 for rods PR3813
- Usable for weld studs M6

W102 ROD CATCH



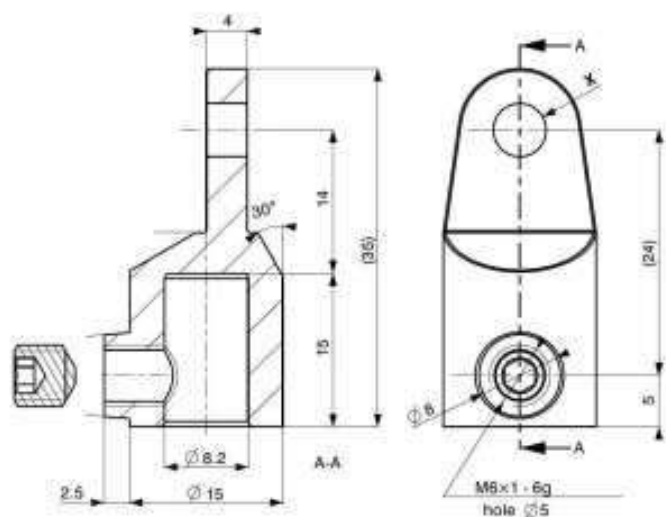
- Material: steel
- Finish: zinc plated
- For rod PR2

W109 ROD GUIDE



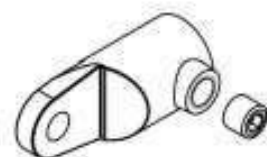
- Material: steel
- Finish: zinc plated
- Rod guide W109-1 for rods PR36, W109-2 for rods PR38, except PR3813

W178 ADAPTER



W178	Pin hole diameter X	Rod diameter
1	Ø 5.2	1 Ø 8
2	Ø 6.2	2 Ø 6

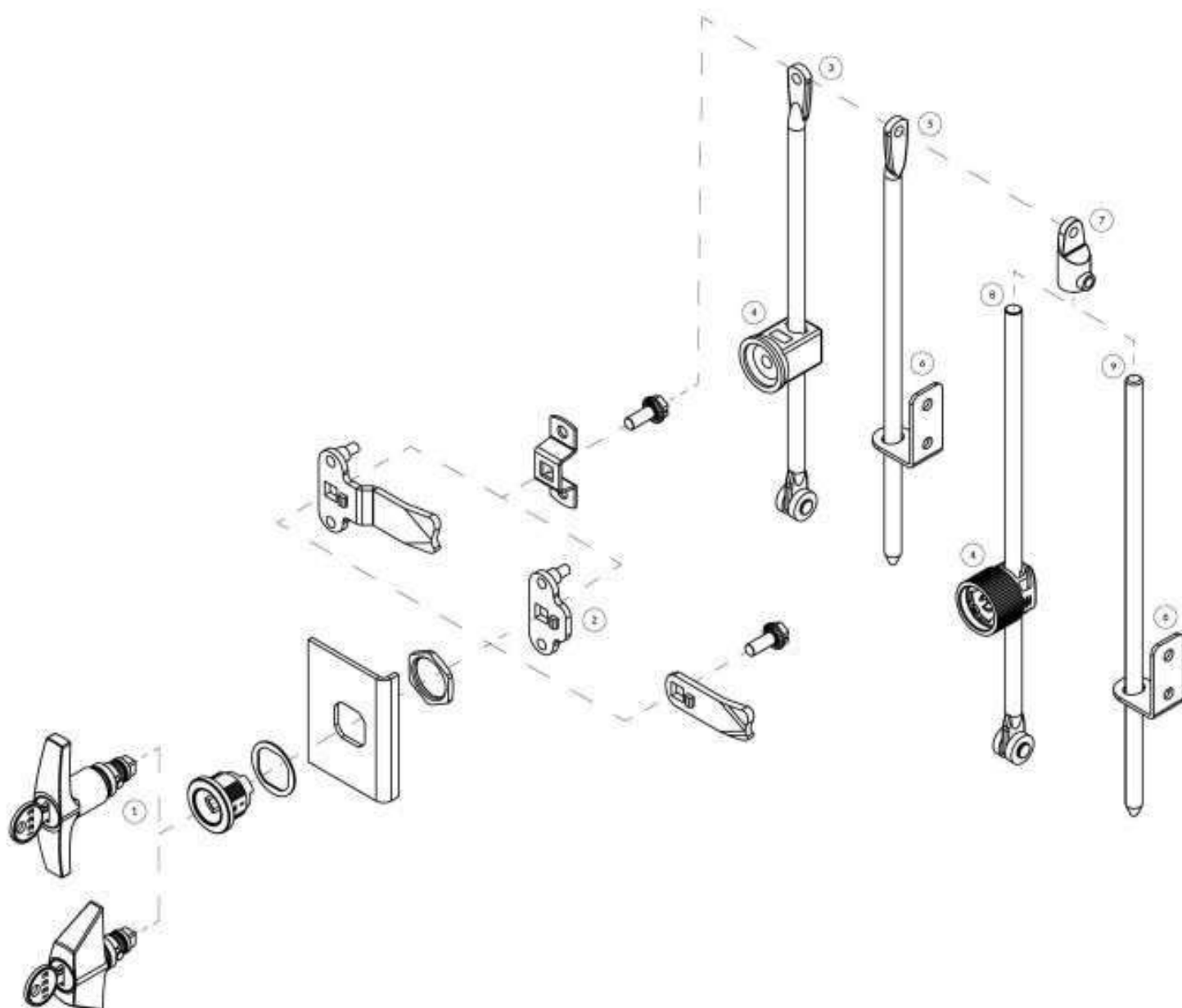
EXAMPLE: W178 - 1 - 1



- Material: ZAMAK
- Finish: zinc plated
- Dimension X=5.2 mm or 6.2 mm
- Screw included in the set, packed separately

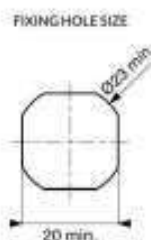
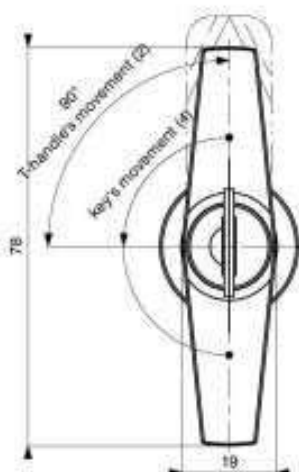
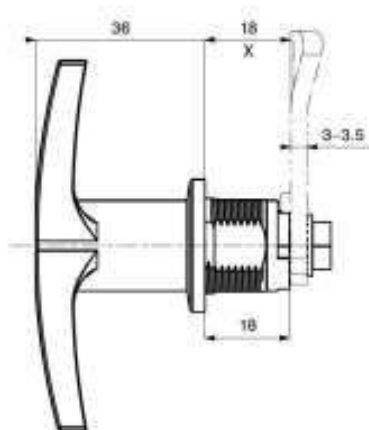


PROGRAM Ø 23×20



Ref.	Symbol	Description	Page
1	H406, H411	T-handle, W-handle	30
2	1, 2, 3-point cams	Cams	21-22
4, 6, 7	W108-X, W109-X, W178, W147	Accessories for rods	26-28
3, 5, 8, 9	PR3803, PR3612, PR3811, PR3801, PR3813	Rods	23-25

H406 T-HANDLE



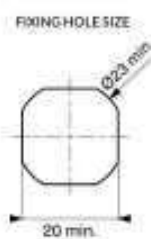
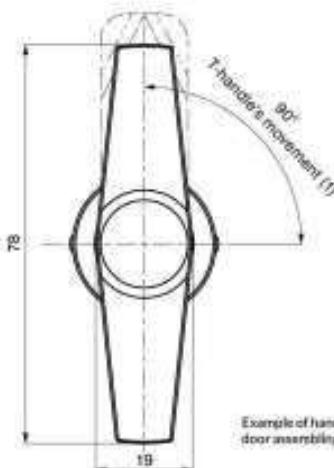
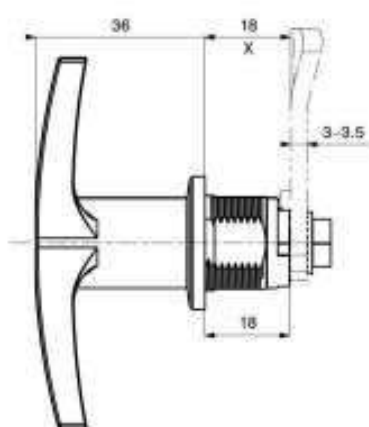
Example of handle with right side door assembling



H406	IP65	Type of handle	Optional finish	T-handle's movement	Key's movement
0	NO	1 T-handle	1B Powder coating	1 90° clockwise	3 180° clockwise
1	YES	2A Chrome plated	7 Nickel plated	2 90° anticlockwise	4 180° anticlockwise
		8H	KTL		

Key's quantity	Key's variant
0 Without keys	KTP XXXX
1 One key	KTDR XXXX
2 Two keys	

EXAMPLE: H406 locking H406 - 0 - 11B - 1 - 3 - 2 - KTP1333



Example of handle with left side door assembling



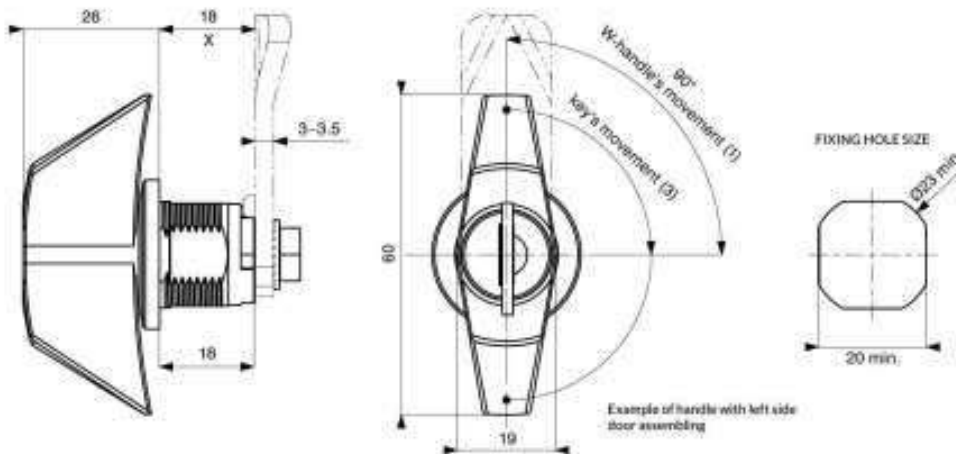
H406	IP65	Type of handle	Optional finish	T-handle's movement
0	NO	2 T-handle non locking	1B Powder coating	1 90° clockwise
1	YES	2A Chrome plated	7 Nickel plated	2 90° anticlockwise
		8H	KTL	

- Material: ZAMAK
- Available with 1-, 2- or 3-point cam
- Quantity of combinations: 500 (R series)
- Handle with removable barrel, without IP65 - only for request

EXAMPLE: H406 non locking H406 - 1 - 21B - 1



H411 W-HANDLE

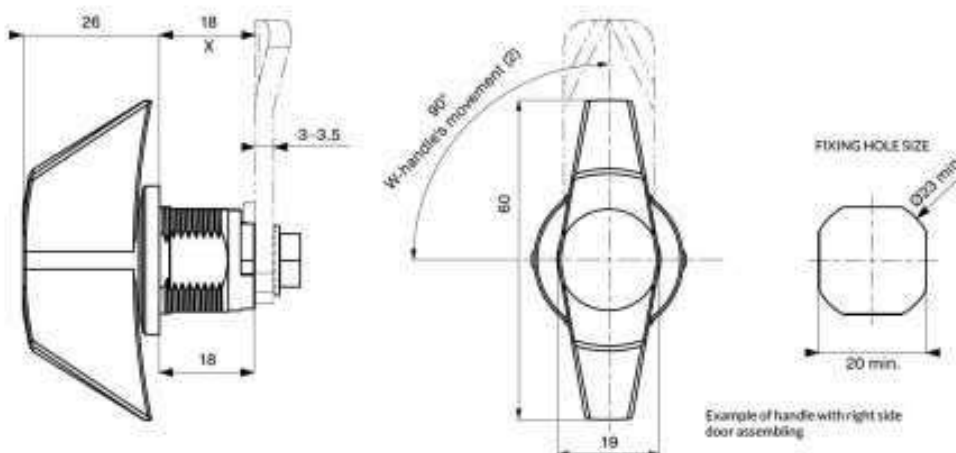


H411	IP65	Type of handle	Optional finish	T-handle's movement	Key's movement
0	NO	1 W-handle	1B Powder coating	1 90° clockwise	3 180° clockwise
1	YES		2A Chrome plated	2 90° anticlockwise	4 180° anticlockwise
			7 Nickel plated		
			8H KTL		

Key's quantity	Key's variant
0 Without keys	KTP XXXX
1 One key	KTDR XXXX
2 Two keys	

EXAMPLE:
H411 locking

H411 - 0 - 11B - 1 - 3 - 2 - KTP1333



H411	IP65	Type of handle	Optional finish	T-handle's movement
0	NO	2 W-handle non locking	1B Powder coating	1 90° clockwise
1	YES		2A Chrome plated	2 90° anticlockwise
			7 Nickel plated	
			8H KTL	

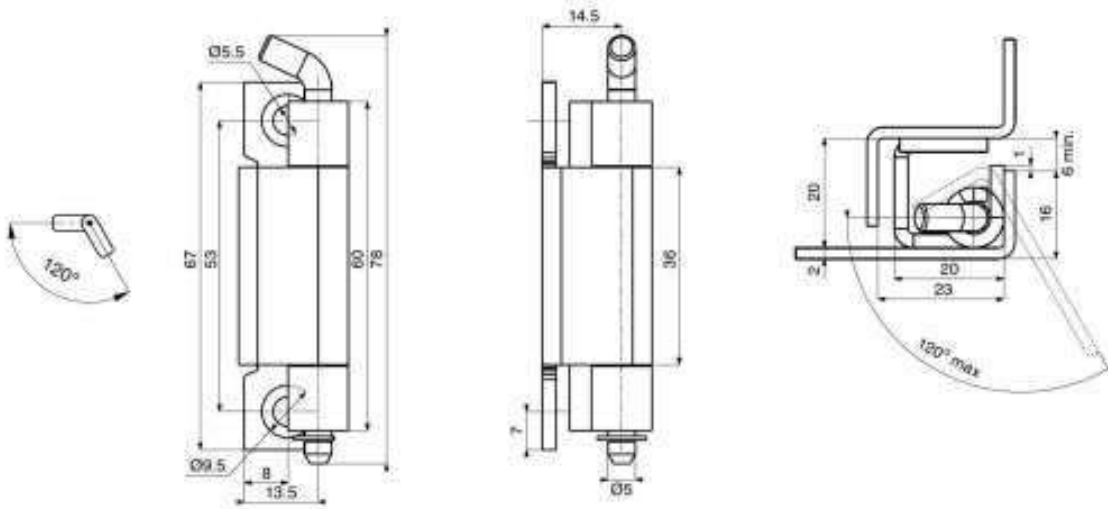
- Material: ZAMAK
- Available with 1-, 2- or 3-point cam

- Quantity of combinations: 500 (R series)
- Handle with removable barrel, without IP65 - only for request

EXAMPLE:
H411 non locking

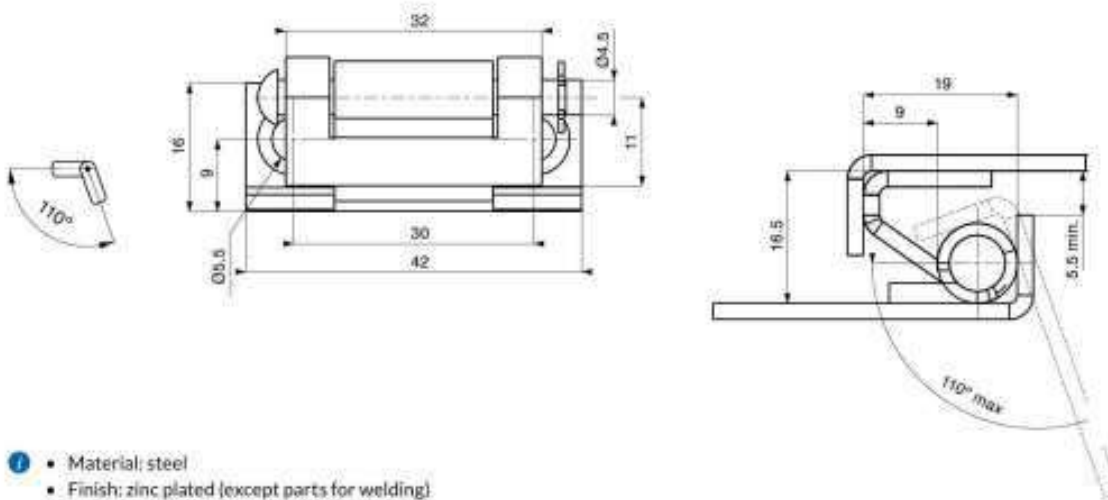
H411 - 1 - 21B - 1

Z100 HINGE



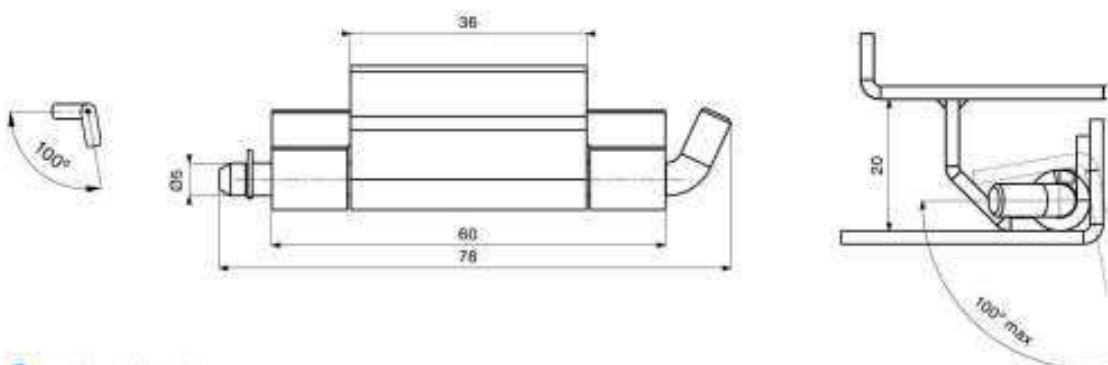
- Material: steel
- Finish: zinc plated (except parts for welding)

Z101 HINGE



- Material: steel
- Finish: zinc plated (except parts for welding)

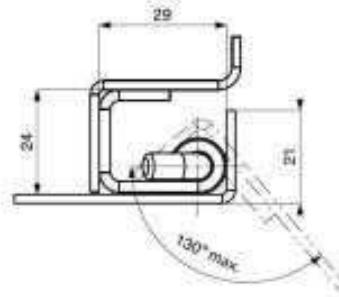
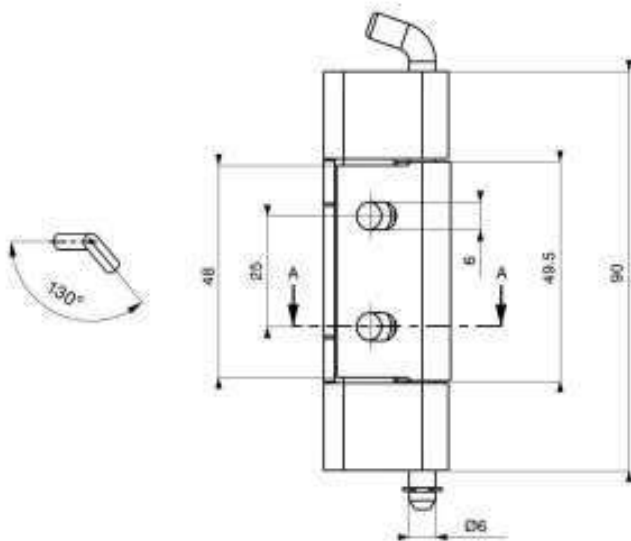
Z102 HINGE



- Material: steel
- Finish: zinc plated (except parts for welding)

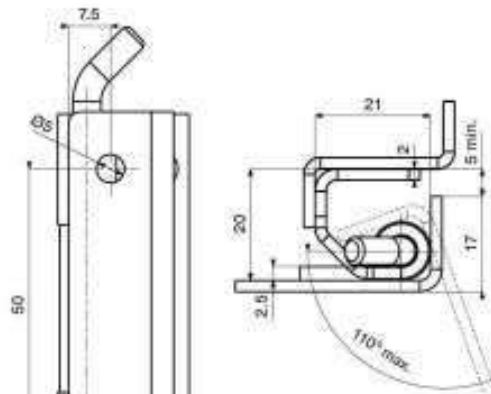
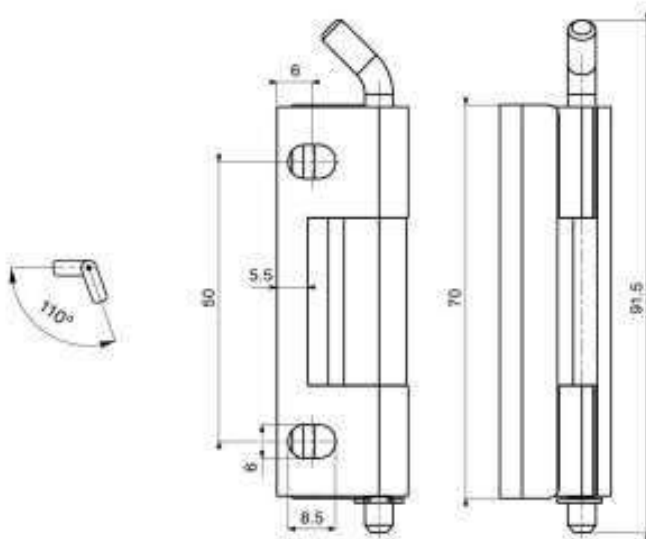


Z106 HINGE



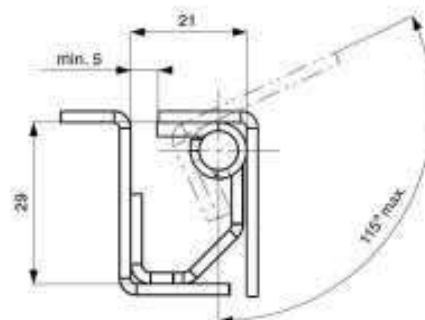
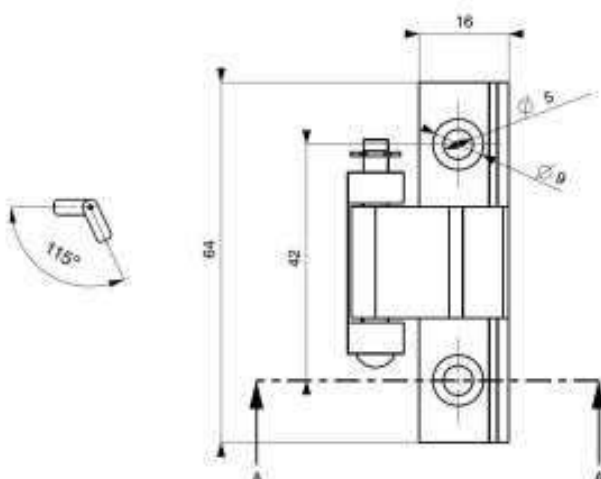
- Material: steel
- Finish: zinc plated, Magnelis® zm120

Z132 HINGE



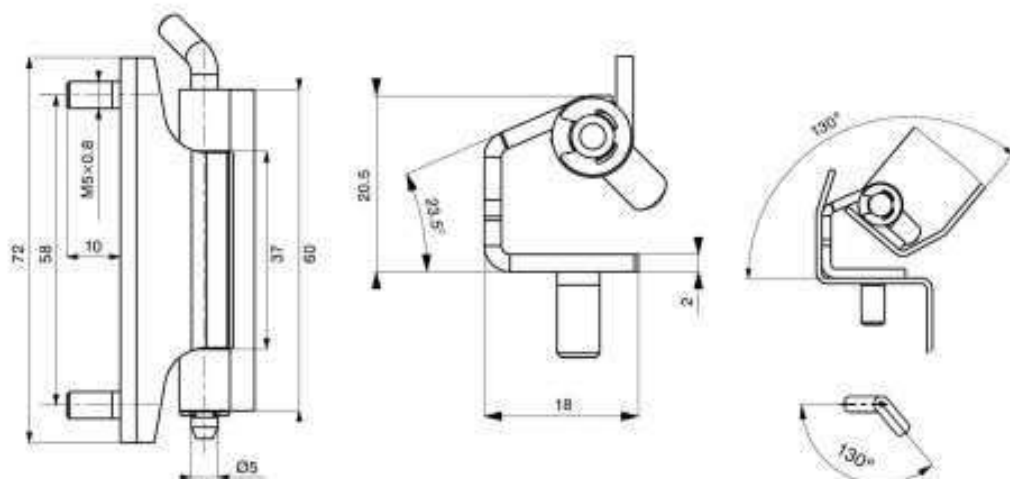
- Material: steel
- Finish: zinc plated

Z141 HINGE



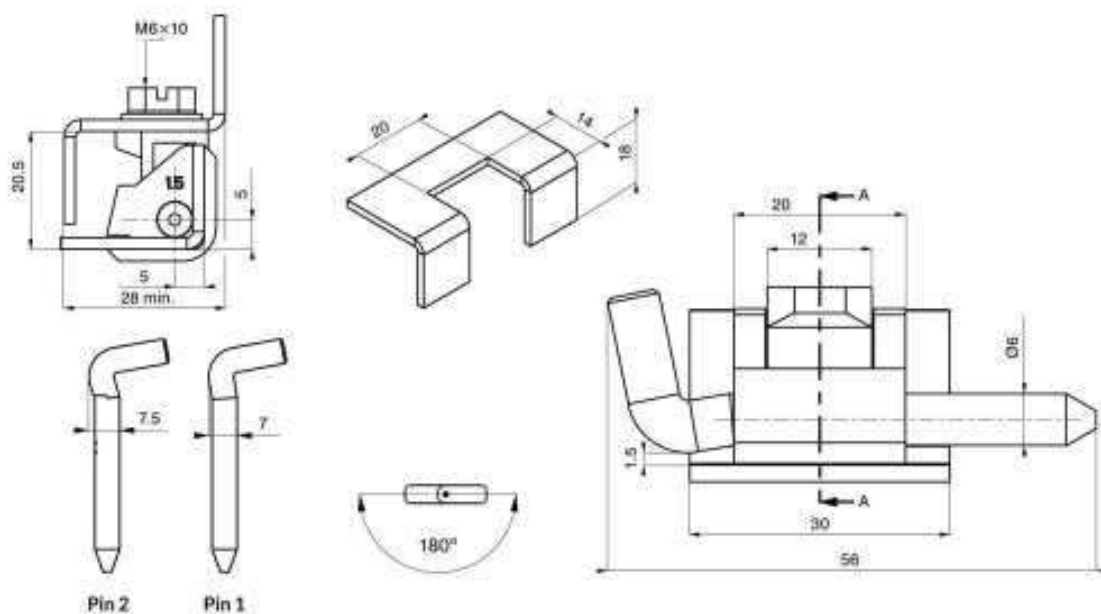
- Material: steel
- Finish: zinc plated, Magnelis® zm120

Z146 HINGE



- Material: steel
- Finish: zinc plated

Z200 HINGE



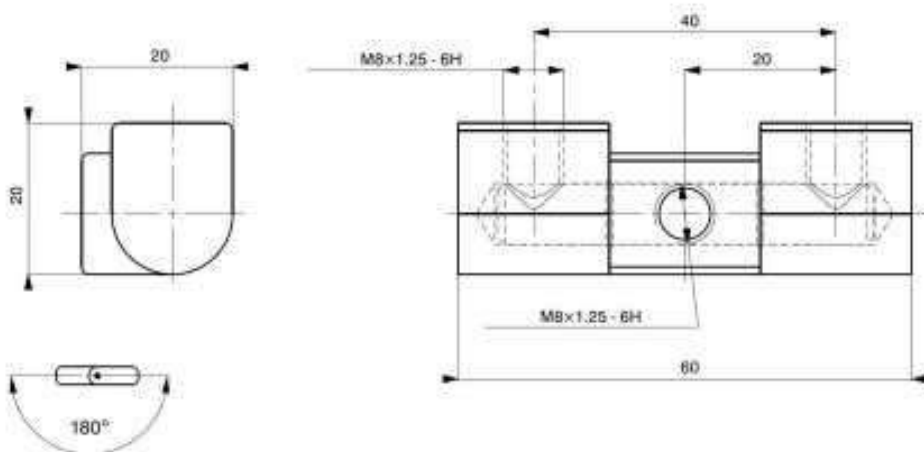
Z200	Material	Optional finish	Panel thickness	Type of pin
ZB	ZAMAK	7B Nickel plated	1 0.8-1.2 mm	1
		2A Chrome plated	2 1.5-2 mm	2
		8H KTL		
		XXXX Powder coating		
		6A Zinc plated		

EXAMPLE: Z200-7B-7-1-1

- Material of bolt: steel
- Finish of bolt: zinc plated
- For powder coating instead of XXXX enter symbol from RAL table
- Fixing screw included in the set



Z300 HINGE



Z300 -

Material

Optional finish

MA Brass

7B Nickel plated

2A Chrome plated

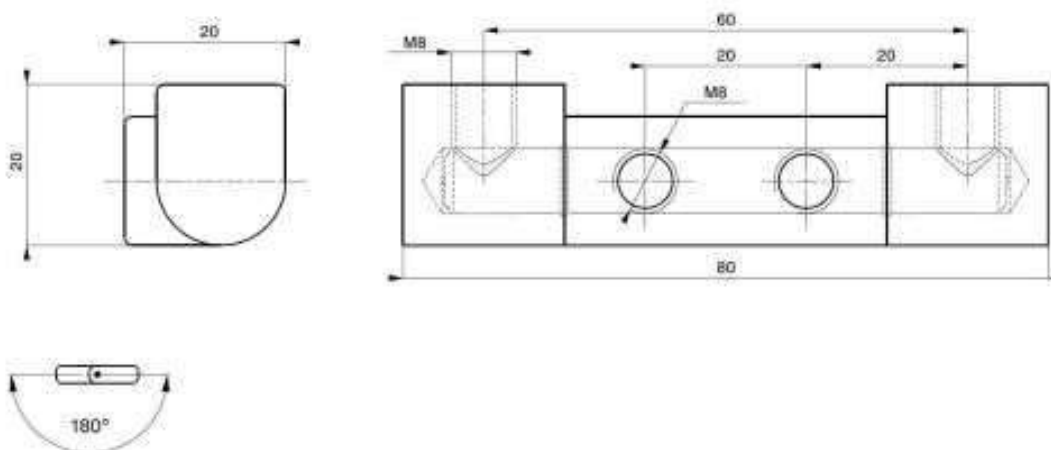
2C Satin chrome plated

6A Zinc plated

EXAMPLE: Z300 - MA - 2A

- Fixing screws and washers included in the set

Z306 HINGE



Z306 -

Material

Optional finish

MA Brass

7B Nickel plated

2A Chrome plated

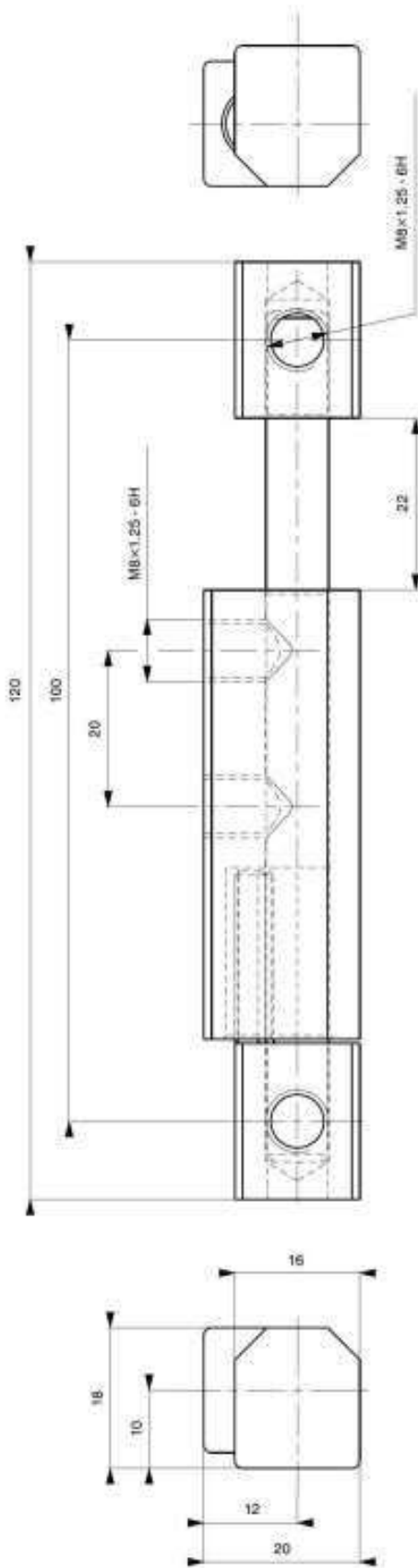
2C Satin chrome plated

6A Zinc plated

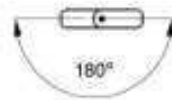
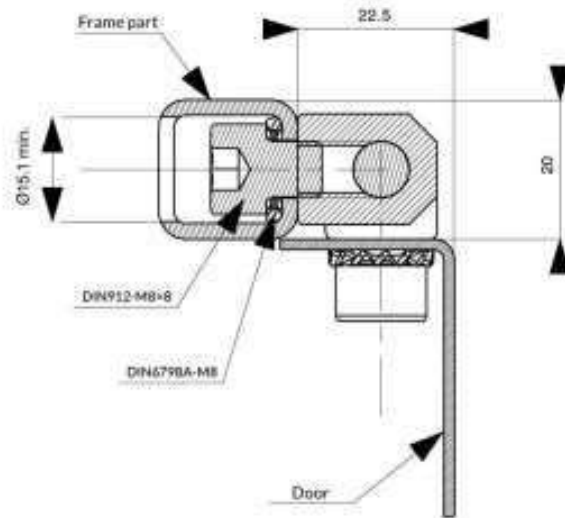
EXAMPLE: Z306 - MA - 2C

- Fixing screws and washers included in the set

Z305 HINGE



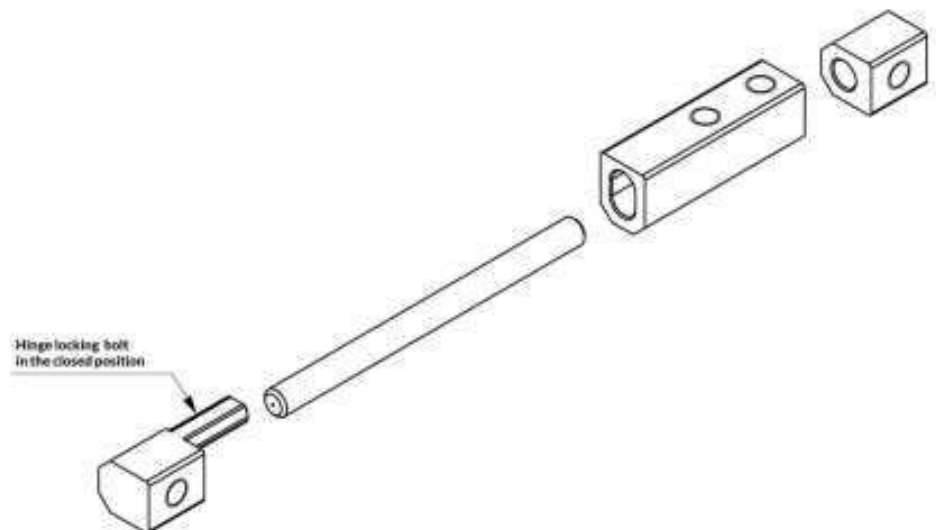
Cross-sectional view of sample application



Hinge close position



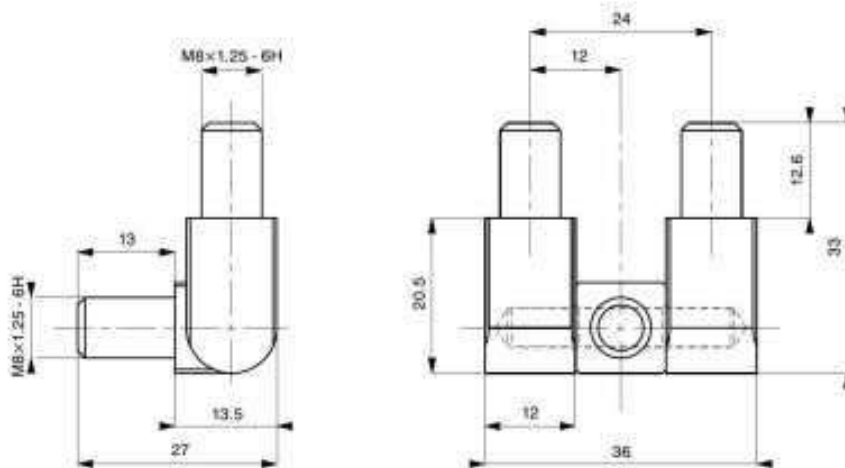
Hinge open position



- To open the door lift and pull
- Stroke: 22 mm
- Material of hinge: steel
- Finish: zinc plated

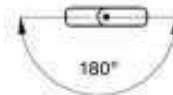


Z308 HINGE



Z308	Material
	S Steel

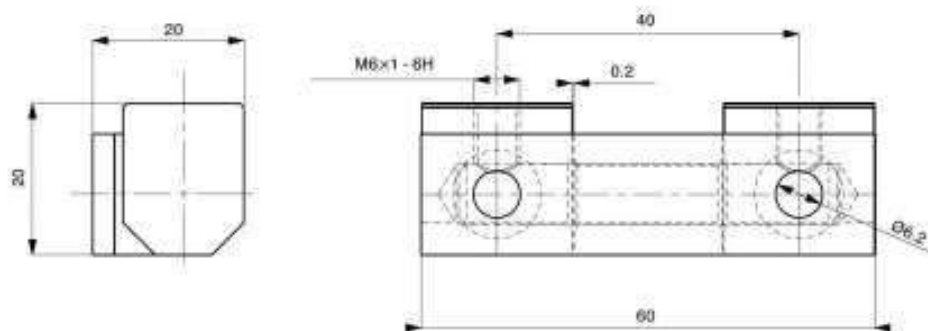
Optional finish	
7B	Nickel plated
2A	Chrome plated
2C	Satin chrome plated
6A	Zinc plated



EXAMPLE: Z308 - S - 7B

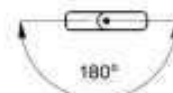
- Material of bolt: steel

Z318 HINGE



Z318	Material
	S Steel

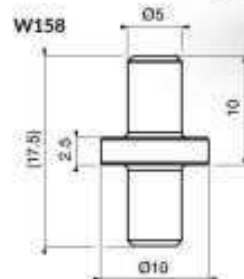
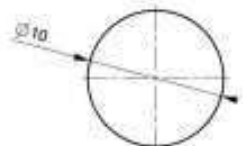
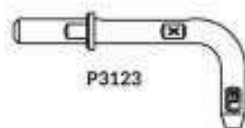
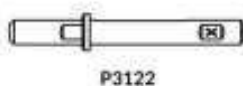
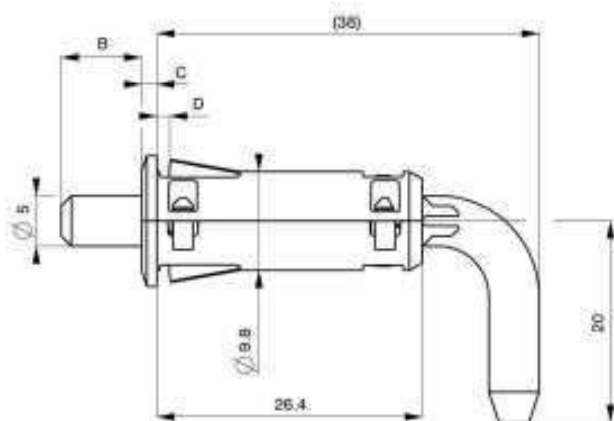
Optional finish	
7B	Nickel plated
2A	Chrome plated
2C	Satin chrome plated
6A	Zinc plated
XXXX	Powder coating



EXAMPLE: Z318 - S - 7B

- Fixing screws and washers included in the set
- For powder coating instead of XXXX enter symbol from RAL table

Z400 HINGE



Z400	Material	Colour	Shape of PIN	Size B and C (mm)	Panel thickness
	PA6	9005 Black - standard	1 Straight	1 B=8 / C=1,5	1 0,8-1,2 mm
		Other RAL On request *	2 Bend	2 B=7 / C=2,5	2 1,2-1,7 mm
					3 1,7-2,2 mm

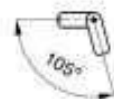
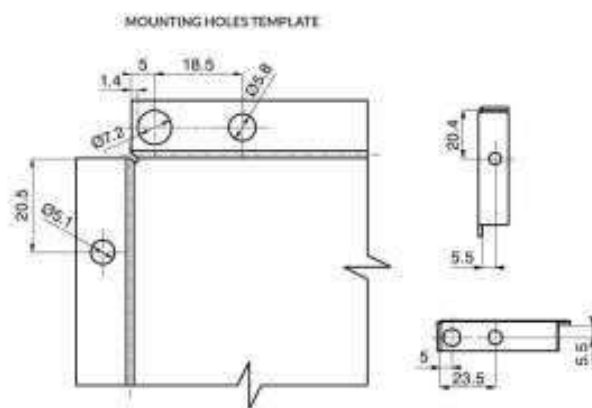
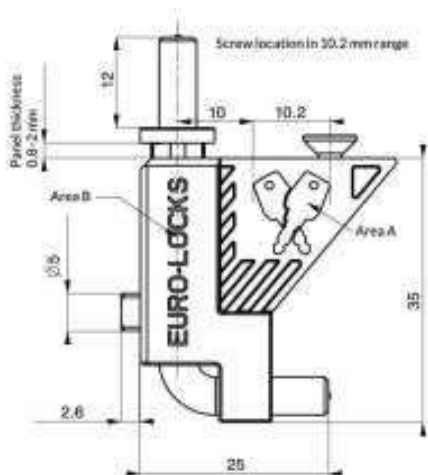


EXAMPLE: Z400 - PA6 - 9005 - 2 - 2 - 2

- Material of bolt: ZAMAK
- Steel pivot W158 can be used instead of bottom hinge.

- Not included in the set of Z400. Available as a separate product
- * Available on request only (please contact with office)

Z403 HINGE



Z403	Colour	Area A	Area B
	9005 Black - standard	0 Without logo	0 Without logo
	Other RAL On request *	1 E-L logo	1 E-L logo *
		2 Client's logo *	2 Client's logo *

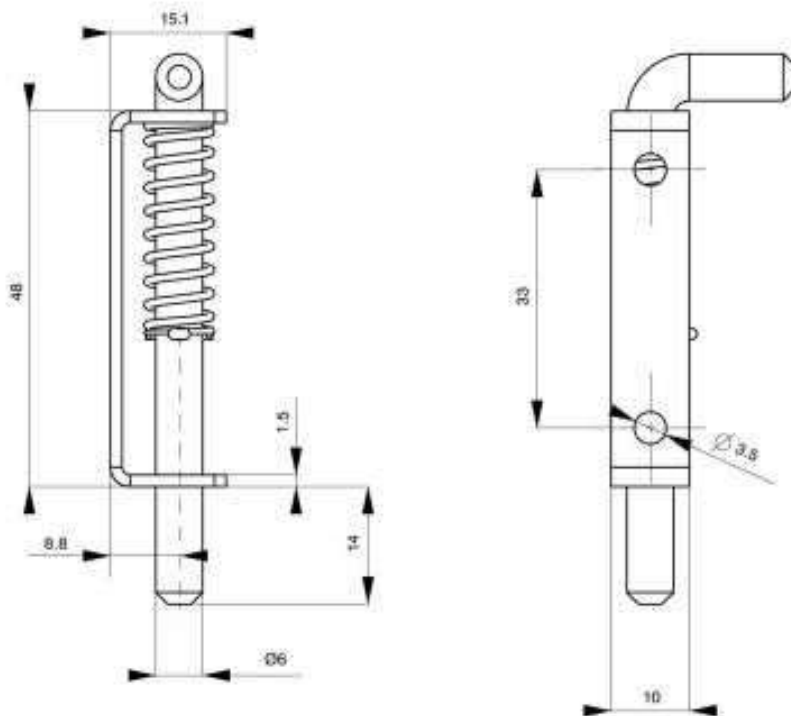
EXAMPLE: Z403 - 9005 - 1 - 0

- Panel thickness range: 0.8-2.0 mm
- One version for LH and RH door
- Quick and stable fixing with guide
- Prepared for additional screw fixing (not included in the set)

- Material of hinge: PA6
- Material of Ø5 mm bolt: zinc plated
- * Available on request only (please contact with office)

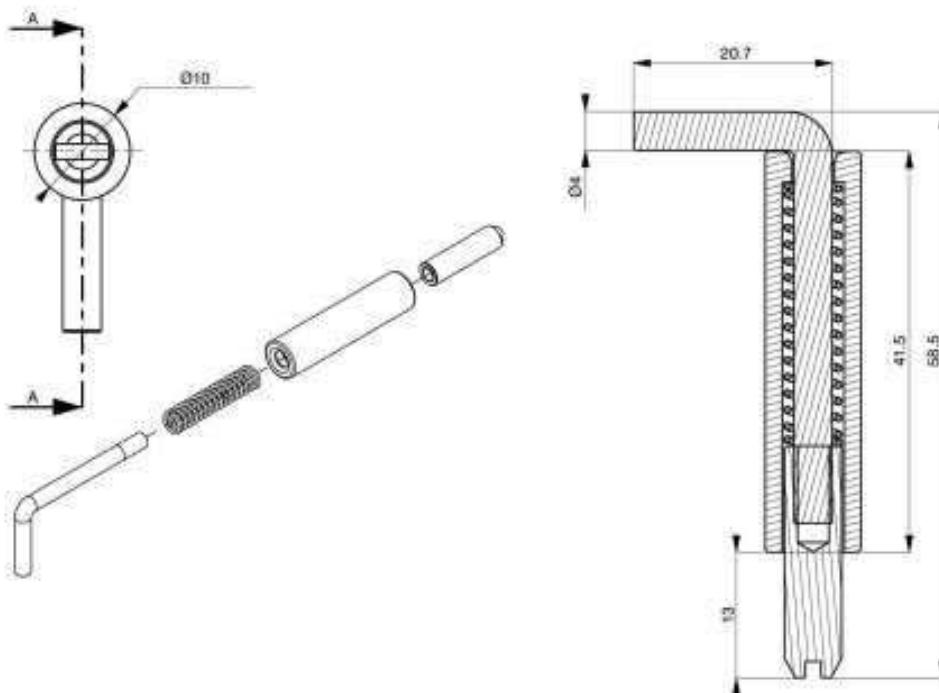


Z408 HINGE



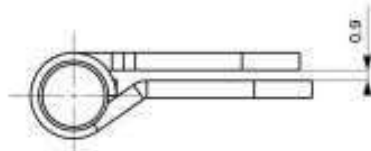
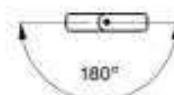
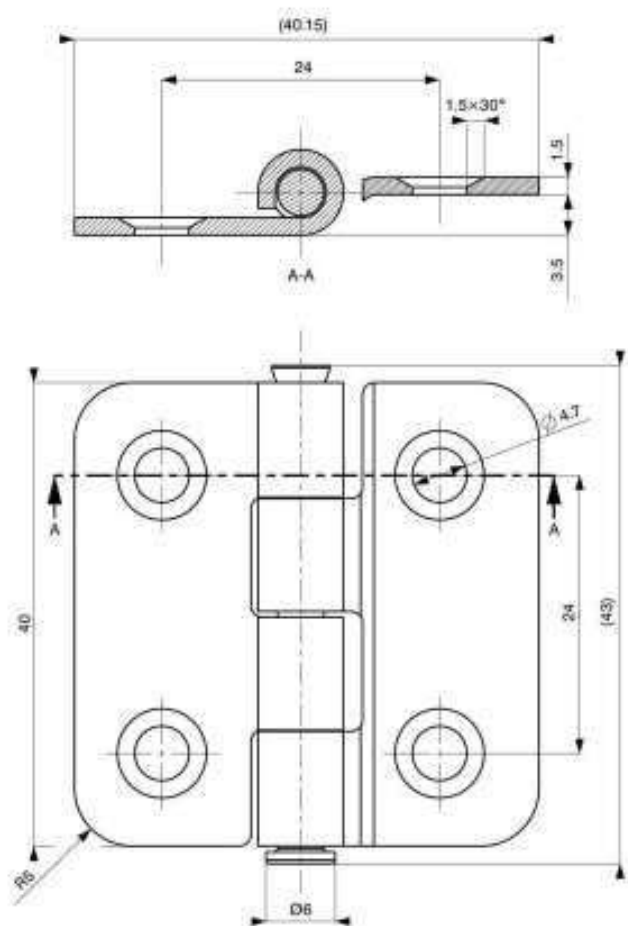
- Material: steel
- Finish: zinc plated

Z406 HINGE



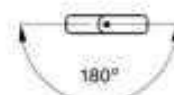
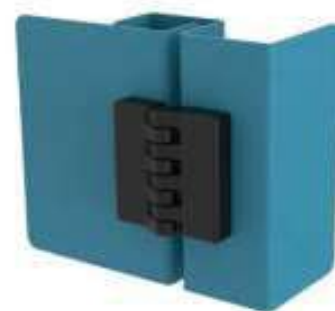
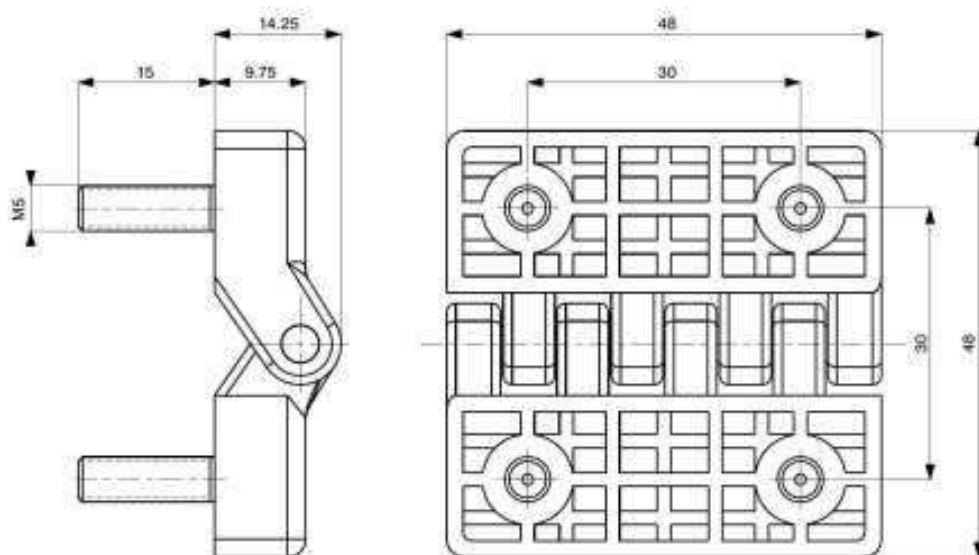
- Pin hinge for welding
- Material: steel
- Spring material: stainless steel
- Finish: zinc plated (except parts for welding)

Z526 FLAT HINGE



- Material of hinge: AISI304

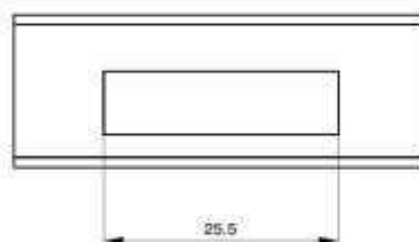
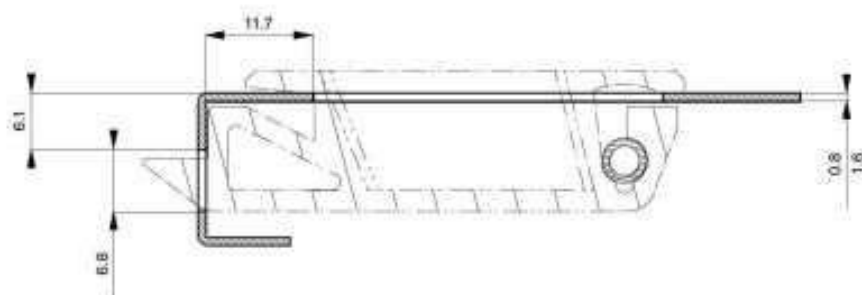
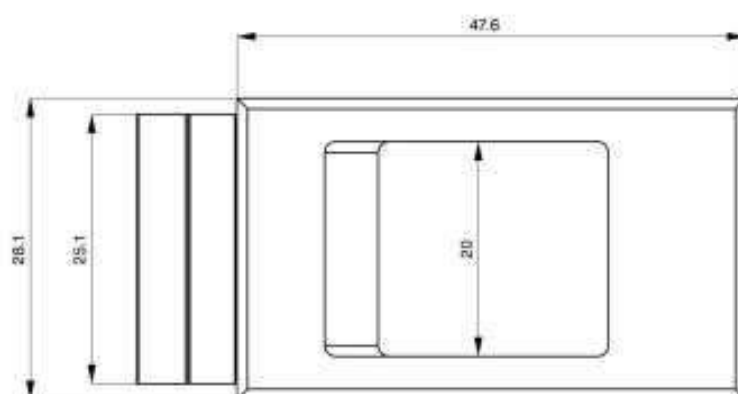
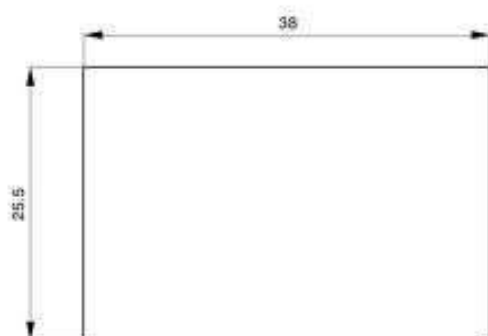
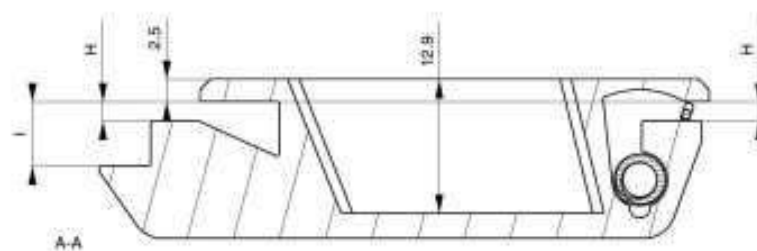
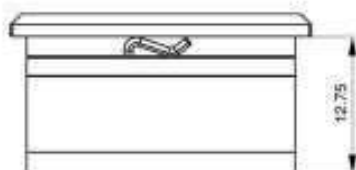
Z509 FLAT HINGE



- Material of hinge: PA6GF30
- Besoted pin hinge
- Different dimension of pins on request only (please contact with office)



H301 SLIDE LATCH

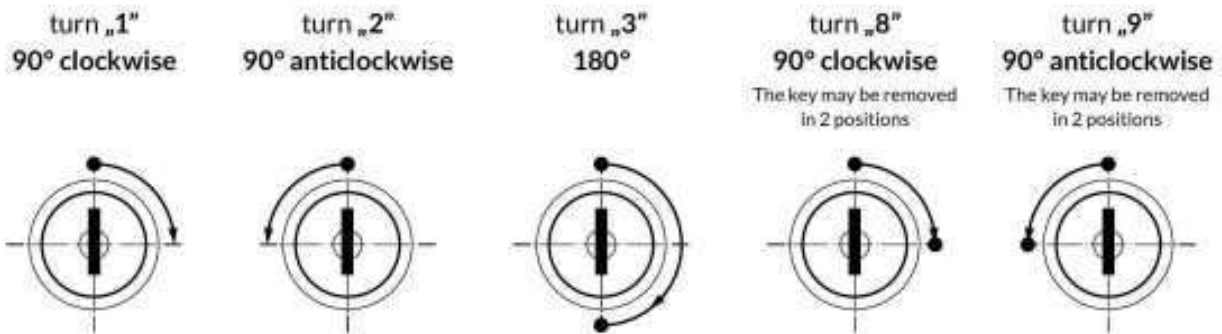
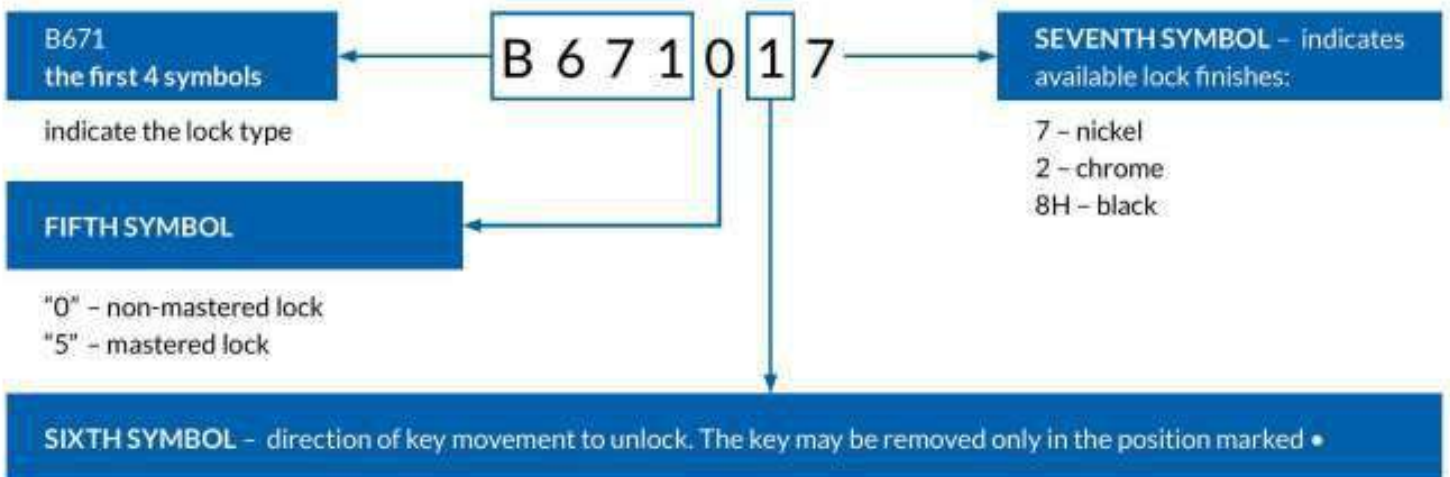


H301	Material	Colour	Size H [mm]	Panel thickness [mm]	Size I [mm]
	PA6	9005 Black - standard	1	1.4	0.8-1.1
		Other RAL On request *	2	1.8	1.2-1.6
					2 6.6

EXAMPLE: H301 - PA6 - 9005 - 2 - 2

- Material: PA6
- Colour: Black
- The dimension H and I can be changed on request (please contact with office)
- * Available on request only (please contact with office)

Explanation of product code

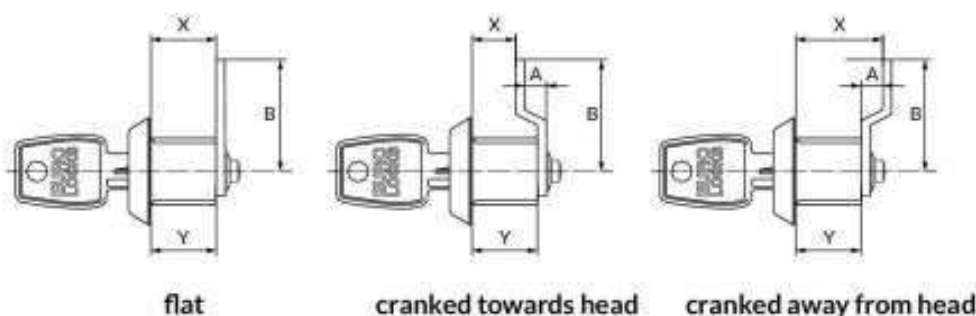


Abbreviations used in the product description

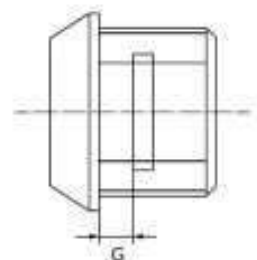
- KTP** All locks have the same key number.
- KTD** All locks have different key numbers.
- KTDS** The locks are built in the "set" number groups. Each set has a different key number and any amount of locks and keys within a given set.
In the above abbreviations, the digit on the front is the amount of keys in a set for one lock (for example 2 KTP or 3 KTD).
- MASTER** All locks have different numbers of keys but there is a master key that opens all locks.
- DNOC** Key number is stamped on the barrel front. This assists in obtaining replacement keys if they are lost.
- MILLING** Cut in the lock body, for fixing the lock with a clip instead of a nut. For example (X-02).

Cams

- shapes and mounting methods

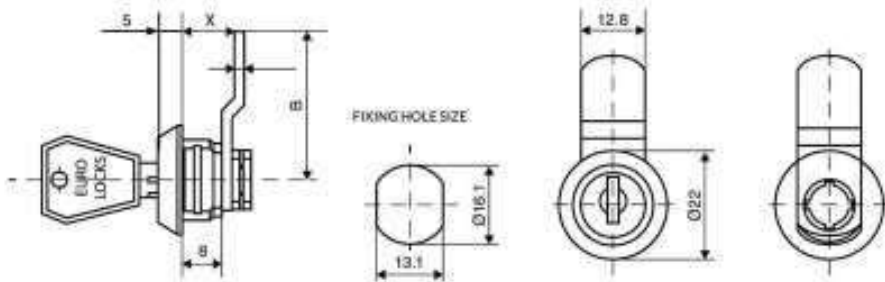


Milling "X"	Dimension "G" plate thickness [mm]
01	0.56-0.82
02	0.82-1.22
03	1.22-1.63





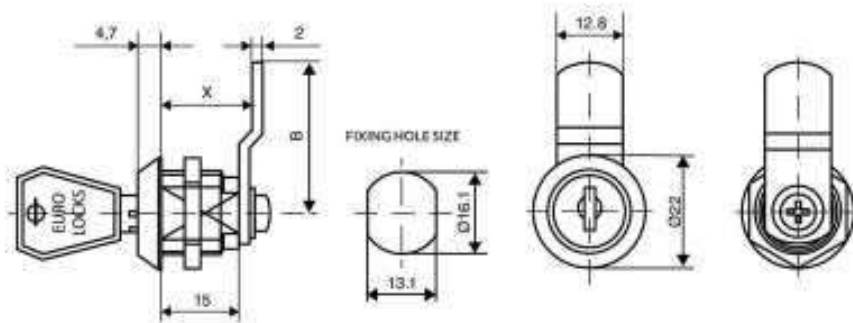
0202 CAMLOCK



- M - "Master" Key System is supplied to order only

Key series	Number of available combinations	Key movement to unlock	Available variants of key combinations	Maximum panel thickness for nut fixing	Milling 'X'	Lock fixing to panel	Available head shapes	Lock finish (electroplated coating)
800 double entry	100	1; 2; 3; 8; 9	KTP; KTD; KTDS	2.5 mm	02	nut, clip	conical	7 - nickel (standard) 2 - chrome (on request)

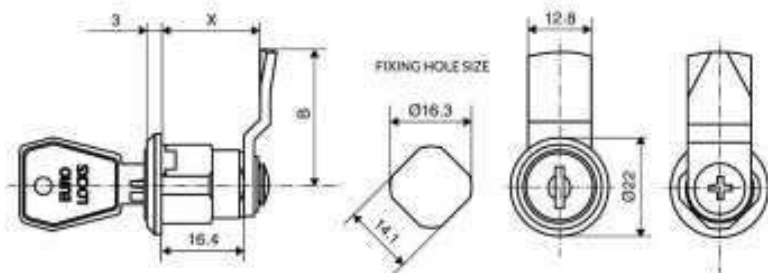
0233 CAMLOCK



- M - "Master" Key System is supplied to order only
- Possibility to change mounting method to horseshoe clip by making the milling adjusted to defined panel thickness

Key series	Number of available combinations	Key movement to unlock	Available variants of key combinations	Maximum panel thickness for nut fixing	Milling 'X'	Lock fixing to panel	Available head shapes	Lock finish (electroplated coating)
800 double entry	100	1; 2; 3; 8	KTP; KTD; KTDS	9 mm	-	nut	conical	7 - nickel (standard) 2 - chrome (on request)

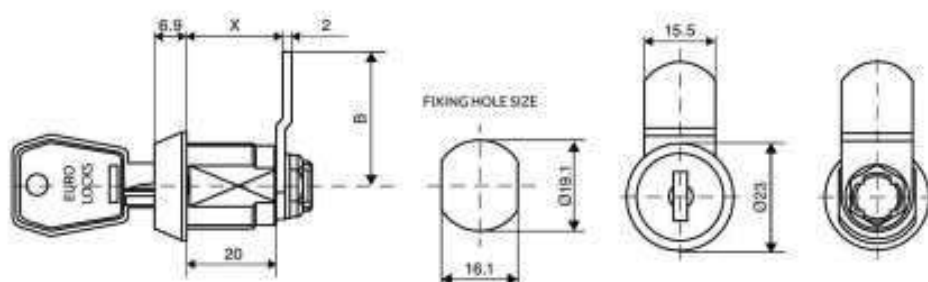
B827/C046 CAMLOCK (ENCLOSURES)



- M - "Master" Key System is supplied to order only

Product ID	Key series	Number of available combinations	Key movement to unlock	Available variants of key combinations	Maximum panel thickness for nut fixing	Milling 'X'	Lock fixing to panel	Available head shapes	Lock finish (electroplated coating)
B827	1D single entry no. 2233	200	8	KTP; KTD; KTDS	7 mm	-	nut	round	7 - standard nickel
C046	800 double entry	100							

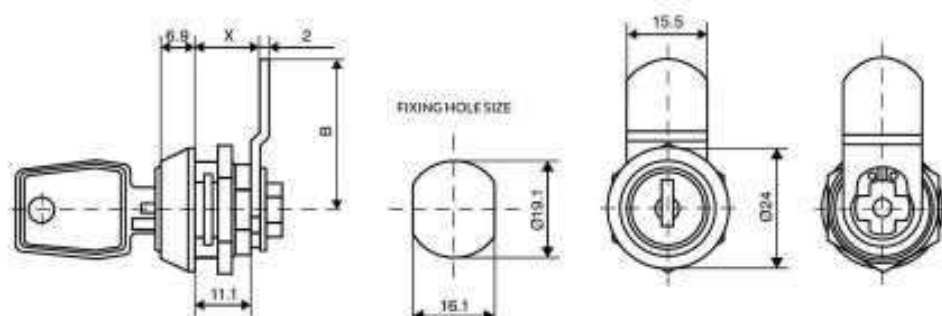
B671 CAMLOCK



• M - "Master" Key System is supplied to order only

Key series	Number of available combinations	Key movement to unlock	Available variants of key combinations	Maximum panel thickness for nut fixing	Milling 'X'	Lock fixing to panel	Available head shapes	Lock finish (electroplated coating)
25/27 double entry	2000	1; 2; 3; 8	KTP; KTD; KTDS	12 mm	02	nut, clip	conical	7 - nickel (standard) 2 - chrome (on request)

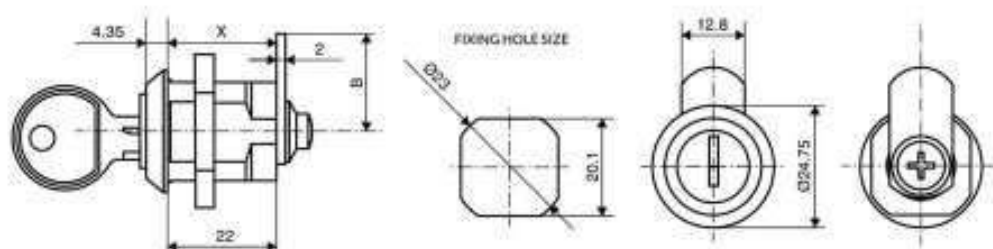
F298 CAMLOCK



• M - "Master" Key System is supplied to order only
• Stainless steel cap

Key series	Number of available combinations	Key movement to unlock	Available variants of key combinations	Maximum panel thickness for nut fixing	Milling 'X'	Lock fixing to panel	Available head shapes	Lock finish (electroplated coating)
9000 double entry	500	1; 2; 3	KTP; KTD; KTDS	5 mm	02	nut, clip	conical	7 - nickel (standard) 2 - chrome (on request)

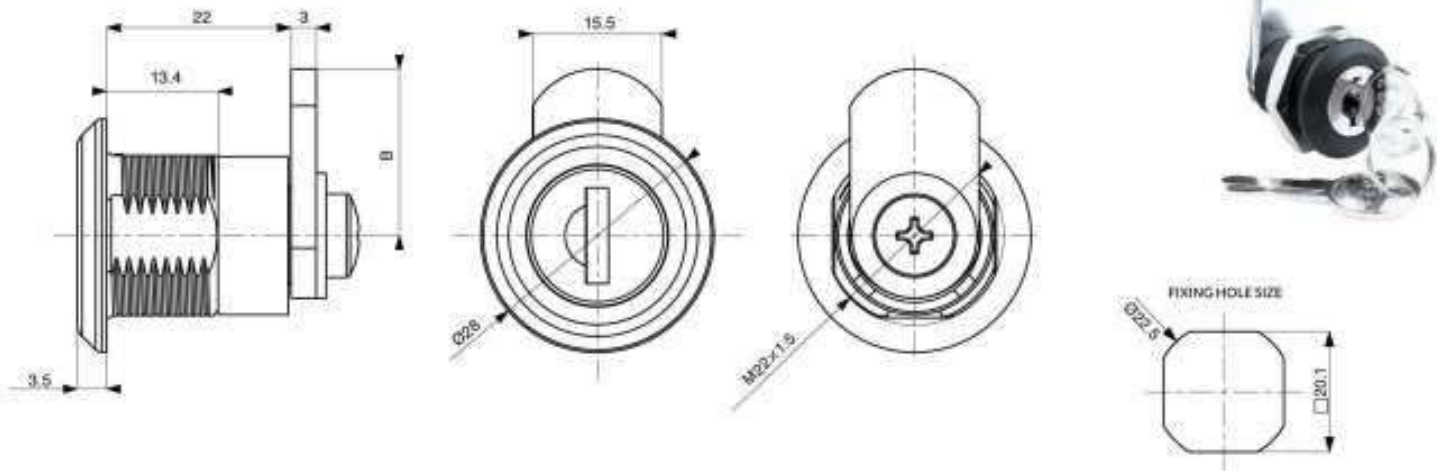
B850 CAMLOCK (ENCLOSURES)



Key series	Number of available combinations	Key movement to unlock	Available variants of key combinations	Maximum panel thickness for nut fixing	Milling 'X'	Lock fixing to panel	Available head shapes	Lock finish (electroplated coating)
89 double entry	200	8	KTP; KTD; KTDS	13 mm	-	nut	conical	2 - chrome



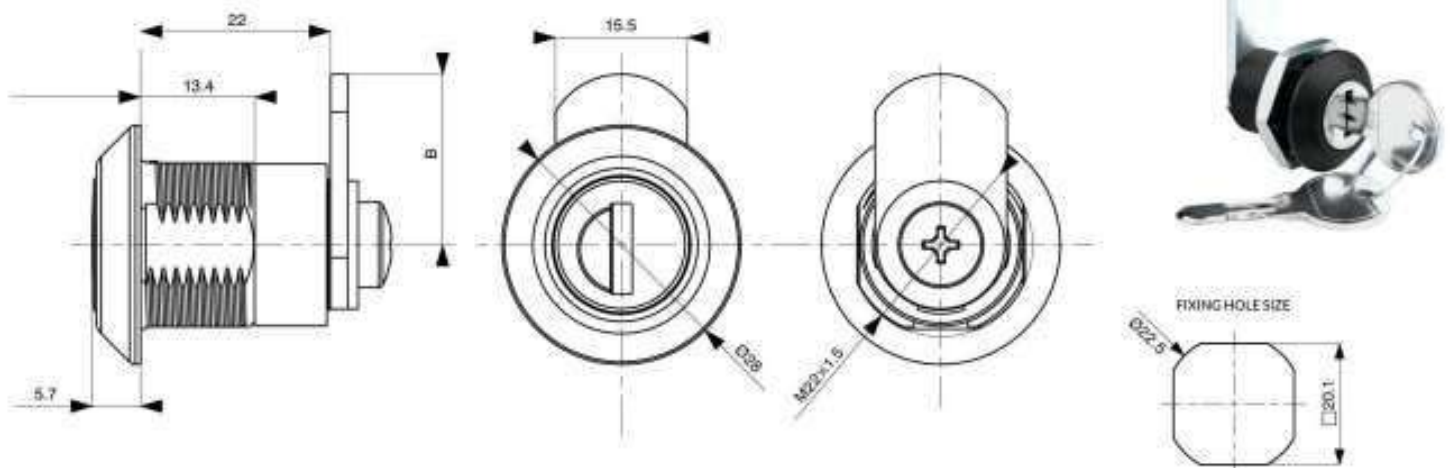
P858/P885 CAMLOCK (ENCLOSURES)



Product code	Key series	Number of available combinations	Key movement to unlock	Available variants of key combinations	Maximum panel thickness	Lock fixing to panel	Available head shapes	Lock finish (electroplated coating)
P858	R-1333 single entry	500	8	KTP: KTD: KTDS	8 mm	nut	conical	Barrel: ZAMAK Housing: PA6GF30
P885	9000 double entry							

- Material of barrel: ZAMAK
- M - "Master" Key System is supplied to order only and available in P885

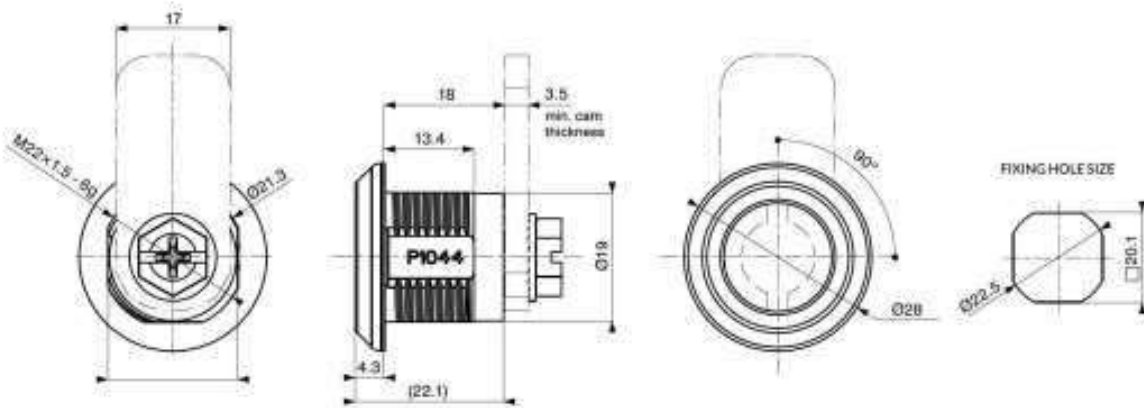
P863/P884 CAMLOCK (ENCLOSURES)



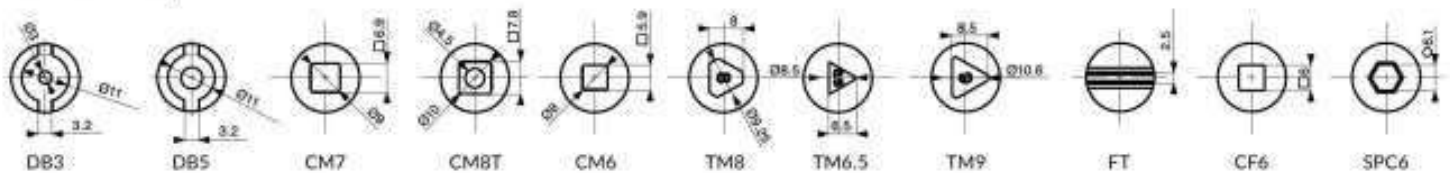
Product code	Key series	Number of available combinations	Key movement to unlock	Available variants of key combinations	Maximum panel thickness	Lock fixing to panel	Available head shapes	Lock finish (electroplated coating)
P863	89 double entry	200	8	KTP: KTD: KTDS	8 mm	nut	conical	Barrel: ZAMAK Housing: PA6GF30
P884	20 double entry	200 nonmaster 50 master						

- Material of barrel: ZAMAK
- M - "Master" Key System is supplied to order only and available in P884

P859 SPANNER LOCK



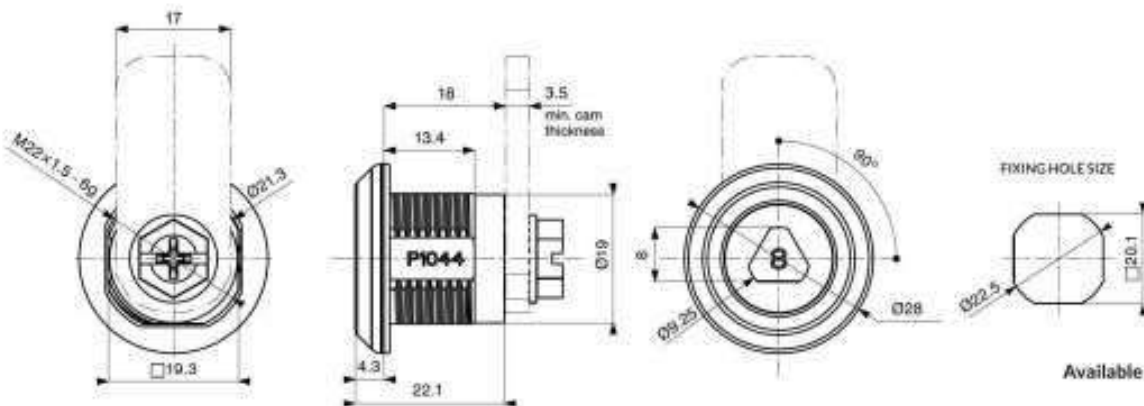
Available barrel shapes



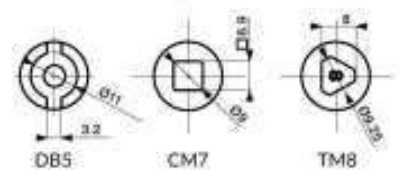
Available barrel shapes	Key movement to unlock	Maximum panel thickness	Milling "X"	Lock fixing to panel	Available head shapes	Barrel finish
double bit, triangle, square	8	11 mm	-	nut	conical	7 - nickel (standard) 2 - chrome (on request)

- IP65 rated
- Key available on request – refer to page 51

P707 SPANNER LOCK



Available barrel shapes

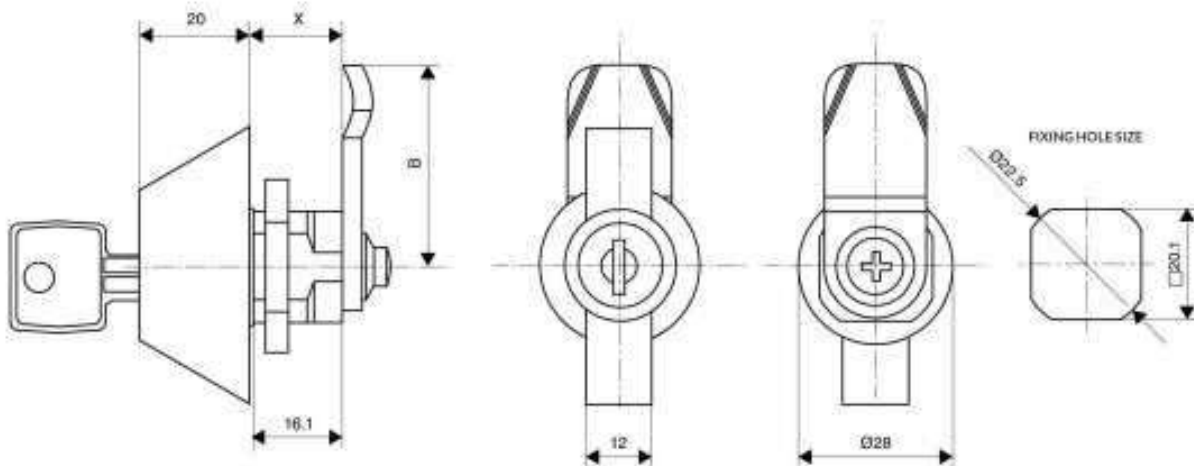


Available barrel shapes	Key movement to unlock	Maximum panel thickness	Milling "X"	Lock fixing to panel	Available head shapes	Barrel finish
double bit, triangle, square	8	11 mm	-	nut	conical	Barrel: PA66 Lock: PA6GF30

- IP65 rated
- Material of cam : steel zinc plated
- Other barrel shapes – please contact our office
- Key available on request – refer to page 51



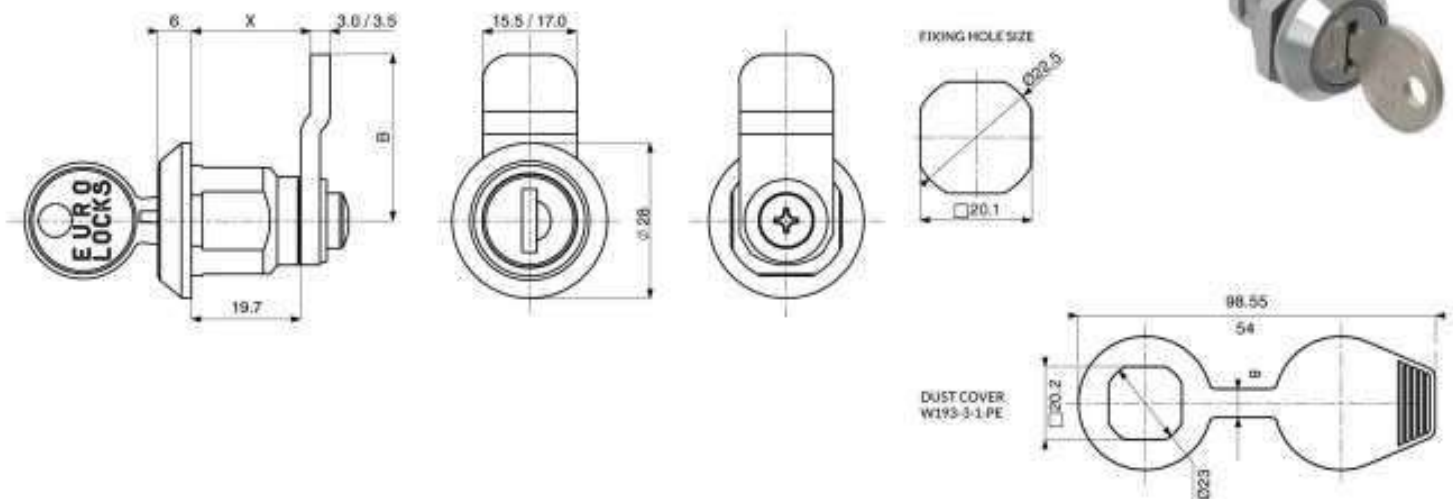
0025/0036 WATER RESISTANT WING HANDLE (ENCLOSURES)



Product code	Key series	Number of available combinations	Key movement to unlock	Available variants of key combinations	Maximum panel thickness	Milling "X"	Lock fixing to panel	Lock finish (electroplated coating)
0025	92 single entry	200	1; 2	KTP; KTD; KTD5	9 mm	-	nut	2 - chrome 1B - powder coating
0036	9000 double entry	500						

• IP65 rated

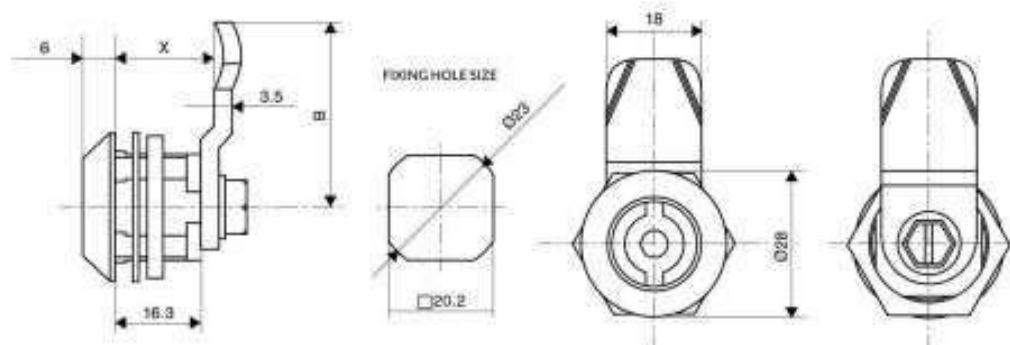
P888/P889 CAMLOCK (ENCLOSURES)



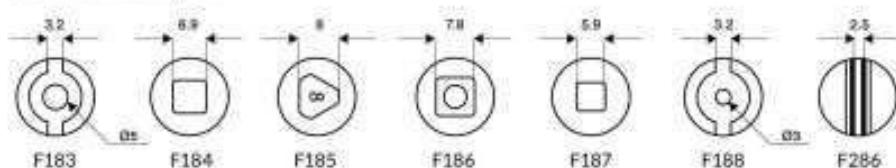
Product code	Key series	Number of available combinations	Key movement to unlock	Available variants of key combinations	Maximum panel thickness	Lock fixing to panel	Available head shapes	Lock finish (electroplated coating)
P888	R-1333 single entry	500	B	KTP; KTD; KTD5	9 mm	nut	conical	2 - chrome (standard) 7 - nickel (on request)
P889	9000 double entry							

- IP65 rated
- Recommended to use together with W193-3-1-PE anti-dust cover
- M - "Master" Key System is supplied to order only and available in P889

F183 SPANNER LOCK



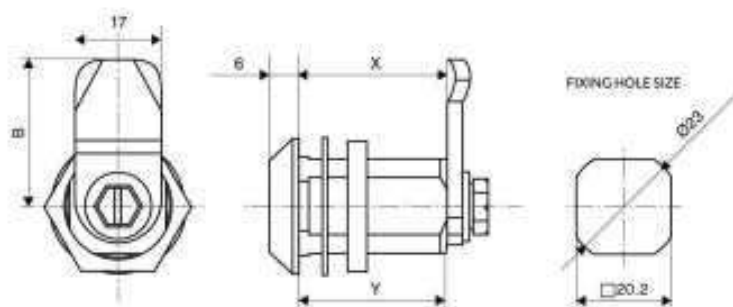
Available barrel shapes



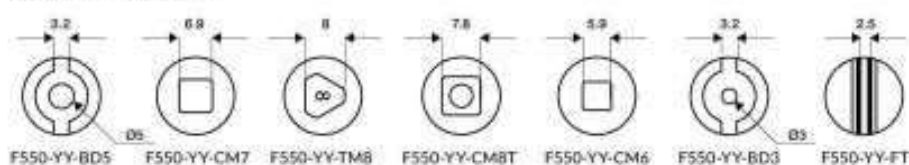
Available barrel shapes	Key movement to unlock	Maximum panel thickness	Milling "X"	Lock fixing to panel	Available head shapes	Lock finish (electroplated coating)
double bit, triangle, square	8	8 mm	-	nut	conical	7 - nickel (standard) 2 - chrome (on request)

- Maximum panel thickness for nut fixing: 8 mm
- IP65 rated
- Key available on request - refer to page 51

F550 SPANNER LOCK



Available barrel shapes



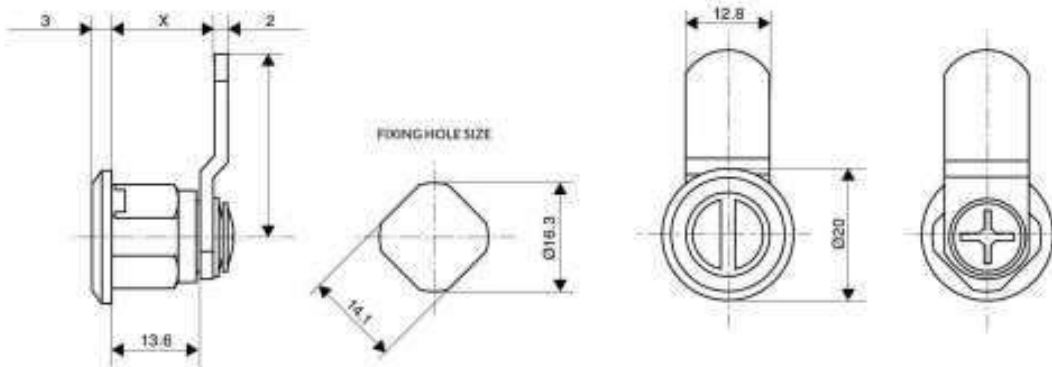
Product code	Housing length (dim Y)	Maximum panel thickness for nut fixing [mm]
F550	30	25
F550	40	35
F550	50	45
F550	60	53

Available barrel shapes	Key movement to unlock	Maximum panel thickness	Milling "X"	Lock fixing to panel	Available head shapes	Lock finish (electroplated coating)
double bit, triangle, square	8	depends upon housing length (see table above)	-	nut	conical	7 - nickel (standard) 2 - chrome (on request)

- IP65 rated
- Key available on request - refer to page 51

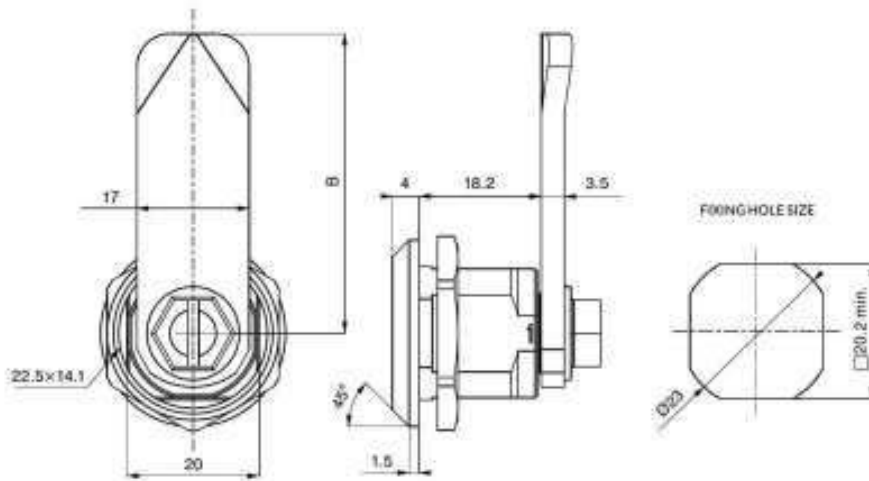


B826 SPANNER LOCK

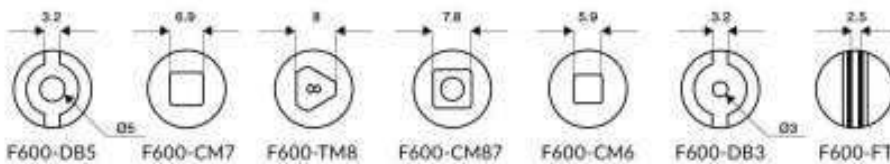


Product code	Available head shapes	Key movement to unlock	Maximum panel thickness	Milling "X"	Lock fixing to panel	Available head shapes	Lock finish (electroplated coating)
B826	screwdriver, coin						
B236	square 6 mm	8	7 mm	-	nut	round	7 - nickel (standard) 2 - chrome (on request)
B971	triangle 7 mm or screwdriver						

F600 SPANNER LOCK



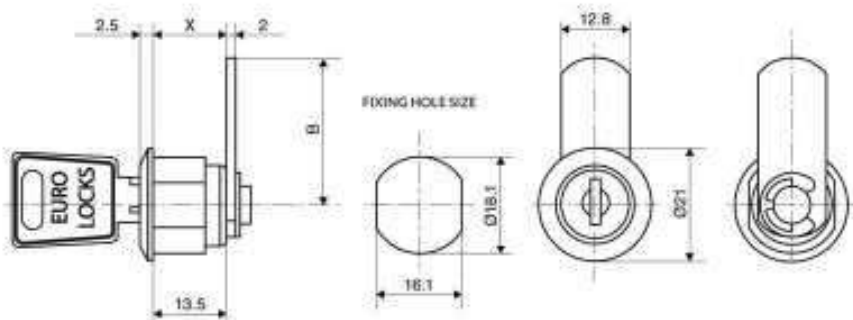
Available barrel shapes



Available barrel shapes	Key movement to unlock	Maximum panel thickness	Milling "X"	Lock fixing to panel	Available head shapes	Lock finish (electroplated coating)
double bit, triangle, square	8	11 mm	-	nut	conical	7 - nickel (standard) 2 - chrome (on request)

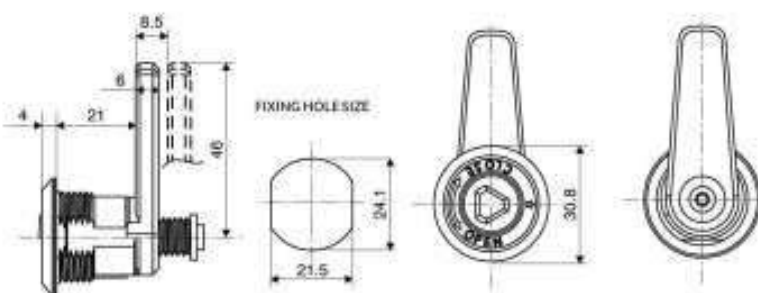
- IP65 rated
- Key available on request - refer to page 51

P451 CAMLOCK (ENCLOSURES)



Key series	Number of available combinations	Key movement to unlock	Available variants of key combinations	Maximum panel thickness for nut fixing	Milling "X"	Lock fixing to panel	Available head shapes	Lock finish (electroplated coating)
FH double entry	200	3	KTP; KTD; KTD5	6 mm	-	nut	round	plastic - RAL 7035

D144/D329 COMPRESSION LOCK



D144

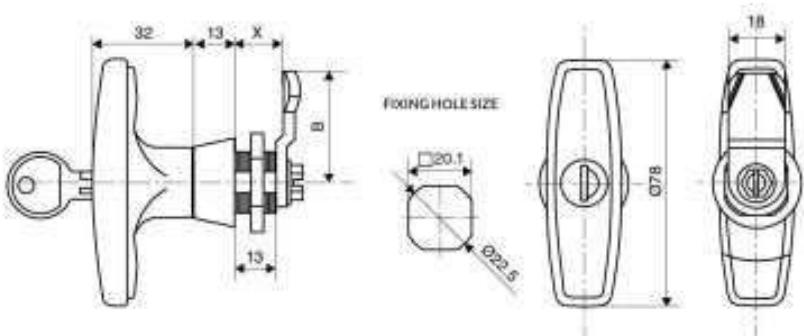


D329

• IP65 rated

Available barrel shapes	Key movement to lock before tightening	Maximum panel thickness	Milling "X"	Lock fixing to panel	Cam stroke	Lock finish (electroplated coating)
triangle 8 mm; square 8 mm; "D" shape	90° to the right	6 mm	-	nut	8.5 mm	6A - zinc plated

C839 T-HANDLE

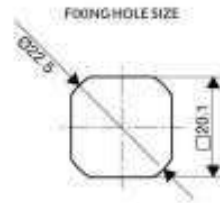
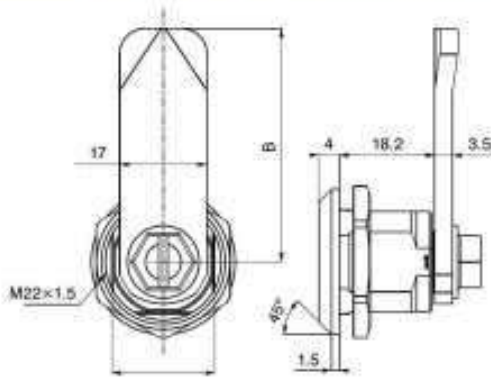


• Dust cover W133 supplied to order only

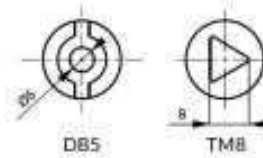
Key series	Number of available combinations	Key movement to unlock	Available variants of key combinations	Maximum panel thickness for nut fixing	Milling "X"	Lock fixing to panel	Available head shapes	Lock finish (electroplated coating)
89 double entry	200	1	KTP; KTD; KTD5	8 mm	-	nut	-	black - plastic



P851 STAINLESS STEEL SPANNER LOCK



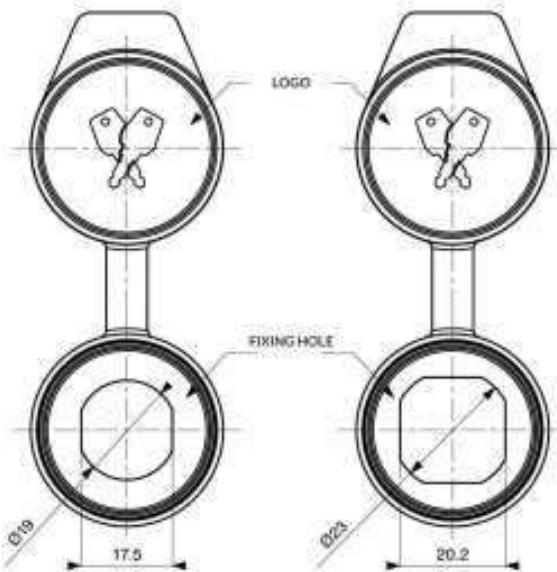
Available barrel shapes



Available barrel shapes	Key movement to unlock	Maximum panel thickness	Lock fixing to panel	Available head shapes	Lock finish (electroplated coating)
double bit, triangle 8 mm	8	8 mm	nut	conical	NA-55 304

• IP66 rated

W193 DUST COVER



W193	Fixing hole	Pad printing logo	Material
1	Ø19x17,5	0 With logo	PE
3	Ø23x□20,2	1 E-L logo	
		2 Client's logo *	

EXAMPLE: W193 - 3 - 1 - PE

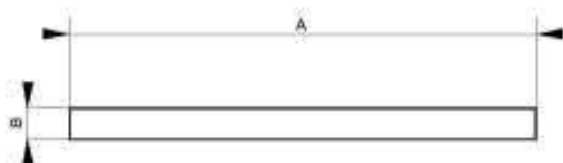
* Available on request only (please contact with office)

KEYS FOR SPANNER LOCKS

Barrel shape	Short keys		Long keys
	ZAMAK	PA6	ZAMAK
DB3	W114	W115	F8412-DB3
BD5	W114	W115	F8412-DB5
CM7			F8412-C7M
CM8T	W117	W164	F8412-C8M
CM6	W119	W177	F8412-C6M
CF6			F8080
TM6,5	W116	W118	F8412-T6,5
TM8	W110	W111	F8412-T8M
TM9		W121	F8412-T9M



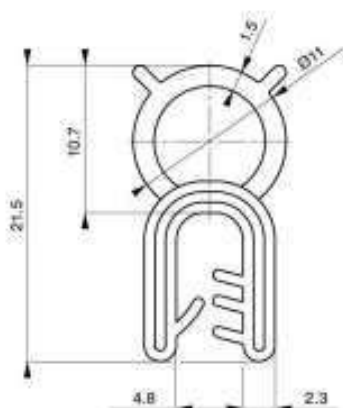
U306 CELL SPONGE RUBBER



- Material: black EPDM with a density ~120kg/m³
- Range of A and B:
Thickness B: 1.5-20 mm
Width A: 5-100 mm
- Dimensions A and B according to the customer's order



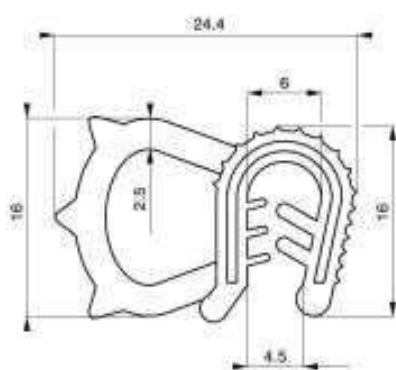
U200 GASKET



- For panel thickness: 1-3 mm
- Material: black EPDM 550 g/dm³
- Gasket with steel core
- Seals packaged in 50 current meters discs



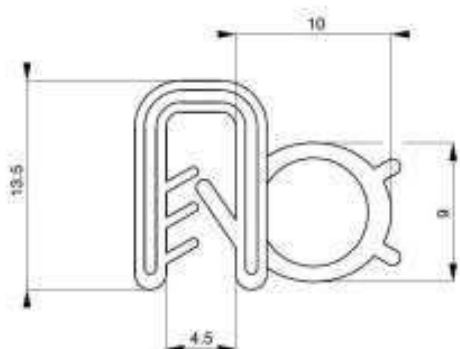
U204 GASKET



- For panel thickness: 1-3 mm
- Material: black EPDM 550 g/dm³
- Gasket with steel core
- Seals packaged in 50 current meters discs



U207 GASKET



- For panel thickness: 1-3 mm
- Material: black EPDM 550 g/dm³
- Gasket with steel core
- Seals packaged in 50 current meters discs





EURO-LOCKS Sp. z o.o.
41-708 Ruda Śląska, ul. Pawła 29, Poland
T: +48 32 344 78 82
T: +48 32 344 78 84
F: +48 32 344 78 74
M: +48 694-430 494
E: sprzedaz@euro-locks.pl



EURO-LOCKS SA NV
Rue de la Fontaine 8, 6600 Bastogne, Belgium
T: +32 61 212 261
F: +32 61 212 265
E: sales@euro-locks.be



EURO-LOCKS SA
1 Rue du Stade, 57730 Folschviller, France
T: +33 (0) 3 87 92 61 11
F: +33 (0) 3 87 92 42 02
E: euro-locks@euro-locks.fr



EURO-LOCKS GmbH
Am Bruchwald 22, D-66280
Sulzbach/Neuweiler, Germany
T: +49 (0) 6897 9072 0
F: +49 (0) 6897 9072 99
E: vertrieb@euro-locks.de



Lowe & Fletcher, Inc.
650 Airport Place, MI 49441 Norton Shores
USA
T: 001 616 994 0490
F: 001 616 994 0480
E: sales@euro-locks.com



LOWE & FLETCHER Ltd
Moorcroft Drive, Wednesbury, West Midlands
WS10 7DE, England
T: +44 121 505 0400
F: +44 121 505 0420
E: sales@lowe-and-fletcher.co.uk

www.euro-locks.pl
www.connectedlocking.com
www.lowe-and-fletcher.com

